

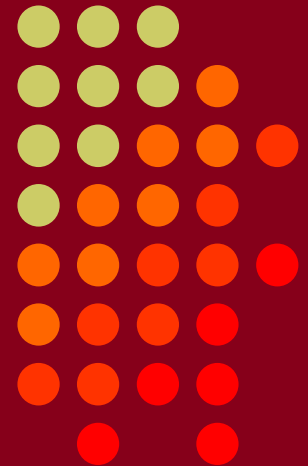
# Easy to Build Low Band Receiving Antennas for Small and Large Lots

- Small antennas
- High performance antennas
- Quantitative performance evaluation

Frank Donovan  
W3LPL

• CTU •  
CONTEST  
UNIVERSITY

ICOM®



# Why Receiving Antennas?



- Much better performance than most transmitting antennas
  - much lower cost
  - greatly reduced footprint
  - greatly reduced height (7 to 25 feet)
  - good directivity on as little as 650 to 2500 square feet
  - excellent directivity on less than an ¼ acre
  - directivity equivalent to a 5 element Yagi on less than 3/4 acre
  - greatly reduced mutual coupling between individual verticals
  - greatly reduced need for efficient matching and extensive radial systems
- High performance arrays perform equivalent to a 5 element Yagi!
- Combining two antennas with a variable phase controller
  - steerable nulls
  - optimizes the front-to-back ratio of phased arrays of Beverages and verticals
- Diversity reception with dual phase locked receivers



# Receiving Directivity Factor (RDF)

proven measure of receiving antenna performance

- Compares forward gain at the desired azimuth and elevation angle to average gain over the entire hemisphere
  - EZNEC computes antenna RDF
- Assumes noise is equally distributed over the entire hemisphere
  - an invalid assumption for suburban and especially urban locations where noise is often concentrated on the horizon
- Assumes that RFI is more than 1000 feet away, in the far field of the antenna
  - where the antenna pattern of large antennas is fully formed, and
  - RFI sources look more like a point sources

<https://www.w8ji.com/receiving>

# Small Receiving Antennas

## 4 - 11 dB RDF



- 4 dB: Bidirectional 8 foot diameter “magnetic” loop *close to the ground*
- 5 dB: Single vertical antenna (short vertical or  $\frac{1}{4}$  wavelength vertical)
- 6 dB: 225 foot Beverage on Ground (BOG)
- 6 dB: 250 to 400 foot Beverage about 7 feet high
- 7 dB: Unidirectional terminated small loop
  - flag, pennant, EWE, VE3DO
- 8 dB: Close spaced arrays of two small terminated loops
  - K9AY Array
  - Shared Apex Loop Array
- 8 dB: Pair of 250 to 400 foot staggered Beverages about 7 feet high
- 9 dB: Two phased short verticals with 60 to 80 foot spacing
- 9 dB: Triangle array of phased short verticals with 60 to 80 foot spacing
- 11 dB: Vertical Waller Flag

# High Performance Receiving Antennas

## 10 - 14 dB RDF



- 10 dB: 500 to 600 foot Beverage about 7 feet high
- 11 dB: Two or three close spaced 500 to 600 foot Beverages, staggered 125 feet
- 11 dB: Vertical Waller Flag array
- **12 dB: 4 square array of active or passive short verticals 80 x 80 ft**
- **12 dB: 3 element YCCC tri-band array of short active verticals 120 ft long**
- **12 dB: 5 element YCCC tri-band array of short active verticals 84 x 84 ft**
- **12 dB: 9-circle YCCC tri-band array of short active verticals 120 ft diameter**
- 12 dB: Horizontal Waller Flag: 2 phased horizontal loops at least 100 ft high
- 13 dB: BSEF array of 4 short verticals switchable in two directions 350 ft x 65 ft
- 13 dB: 8-circle array of short verticals with 106° phasing 200 ft diameter
- 13 dB: 8-circle BSEF array of short passive verticals 350 ft diameter + radials
- 14 dB: Four broadside/end-fire 800 foot Beverages 800 ft x 330 ft

Large antennas are less effective than small antennas at suppressing local RFI sources within a few thousand feet

# Small Single Loop Antennas

**4 - 7 dB RDF    120 - 150° 3 dB Beamwidth**



- 8 foot diameter bidirectional “magnetic” loop    4 dB RDF
  - bi-directional 150 degree beamwidth
  - installed close to the ground to suppress horizontally polarized RFI
  - a specialized antenna for steering a very deep null onto a single ground wave propagated RFI source
  - poor sensitivity for DX compared to larger antennas
- Unidirectional *terminated* small loops    6 - 7 dB RDF
  - flag
  - pennant
  - EWE
  - K9AY
  - VE3DO
- Mechanically rotatable unidirectional terminated small loops
  - rotatable flag

# Arrays of Two Small Loops

## 8 - 11 dB RDF 80 - 120° 3 dB Beamwidth



- Electrically steerable compact arrays of two small loops
  - Two switchable K9AY loops 8 - 9 dB RDF
  - Shared Apex Loop Array 8 - 9 dB RDF
- 350 foot broadside spaced pair of small loops 9 - 10 dB RDF
  - pennant
  - EWE
  - K9AY
  - VE3DO
- Mechanically rotatable array of two small end-fire loops
  - Vertical Waller Flag 11 dB RDF

# BOGs and BOG Arrays

**6 to 8 dB RDF 60 - 90° 3 dB Beamwidth**



- BOG 6 dB RDF 90° beamwidth
  - 225 foot wire laid just above the surface of the ground
- Switchable bi-directional BOG 6 dB RDF 90° beamwidth
  - 225 foot coaxial cable laid just above the surface of the ground
- Close spaced staggered BOGs 7 dB RDF 90° beamwidth
  - two or three close spaced BOGs with 125 foot end fire spacing
  - significantly improves front-to-back ratio especially if a variable phase controller is used
- Two wide spaced BOGs 8 dB RDF 60° beamwidth
  - 350 foot broadside spacing

BOGs are low sensitivity antennas requiring significant suppression of common mode signals from the coaxial cable feed line



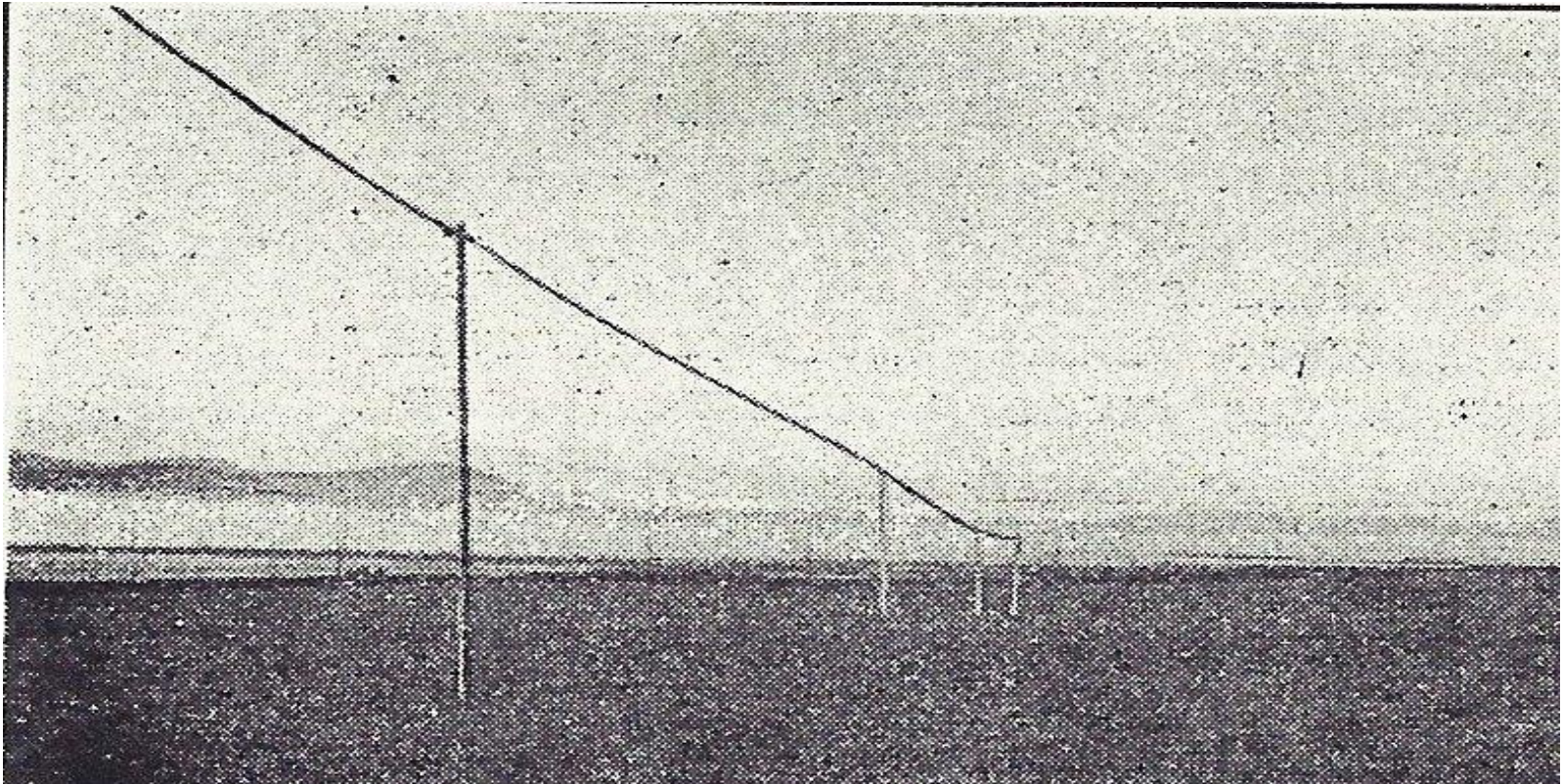
# Beverages and Beverage Arrays

## 6 - 14 dB RDF    45 - 120° 3 dB Beamwidth



- 250 to 400 foot Beverage                      6 dB RDF    90 - 120° 3 dB beamwidth
  - approximately 7 feet high
  - single wire or two wire bi-directional
- 500 to 900 foot Beverage                      8 - 10 dB RDF    50 - 70° 3 dB beamwidth
  - approximately 7 feet high
  - single wire or two wire bi-directional
- Staggered Beverage arrays                      11 dB RDF    50 - 70° 3 dB beamwidth
  - two or three Beverages with 125 foot end-fire spacing
  - significantly improved front-to-back ratio especially with a variable phase controller
- Broadside Beverage arrays                      12-14 dB RDF    45 - 60° 3 dB beamwidth
  - two Beverages with 350 foot broadside spacing, or
  - four Beverages with 125 foot end fire spacing and 350 foot broadside spacing

# 1300 Foot Beverage installed by Paul Godley 2ZE on a beach in Androssan, Scotland during the successful 1921 Trans-Atlantic Tests



Beverages were all but forgotten by hams for 45 years until K1PBW re-introduced them to 160 meter DXers in 1967



# Arrays of Short Verticals

9 - 14 dB RDF 50-135° 3 dB Beamwidth

- Active high impedance 20 foot verticals
  - capable of multi-band operation
  - requires a high input impedance amplifier at the base of each vertical
- or -----
- Passive low impedance 25 foot verticals
  - mono-band antenna only
  - **easy to troubleshoot and repair**      **low parts count**      **very reliable**
  - eight 70 foot or sixteen 35 foot radials at the base of each vertical
    - stabilizes the feed point impedance during all weather conditions
    - decouples the coax shield
  - four 25 foot umbrella wires
    - reduces the required height to 25 feet
    - increases the array bandwidth
    - *if necessary*, 35 foot verticals with no umbrella wires can be substituted

# Small Diameter Loop Antenna

## Eight Foot Diameter “Magnetic” Loop



- Excellent for nulling a single nearby RFI source
  - RFI to be nulled must be vertically polarized and received via ground wave
- Superb antenna for precisely locating RFI sources
- Bi-directional figure-8 pattern 150° 3 dB beamwidth
  - must be installed close to the ground to suppress horizontally polarized signals
- Very deep nulls (only about 2° wide) off both sides of the loop
  - mechanically rotate the loop until the single local RFI source is nulled
  - the null is not as deep for skywave propagated signals
- Small loop antennas produce very low signal levels
  - requires a high gain, low noise figure preamplifier
  - a poor low sensitivity DX receiving antenna
- All attached cables must be choked for common mode signals
  - install common mode chokes on the coaxial feedline and preamp power cable
  - bury cables about 12 inches deep for optimum null depth
- Avoid re-radiated signals from nearby antennas and power lines
  - locate the antenna as far as possible from other antennas and power lines



# Small Diameter Loop Antenna

## 4 dB RDF 150° 3 dB beamwidth



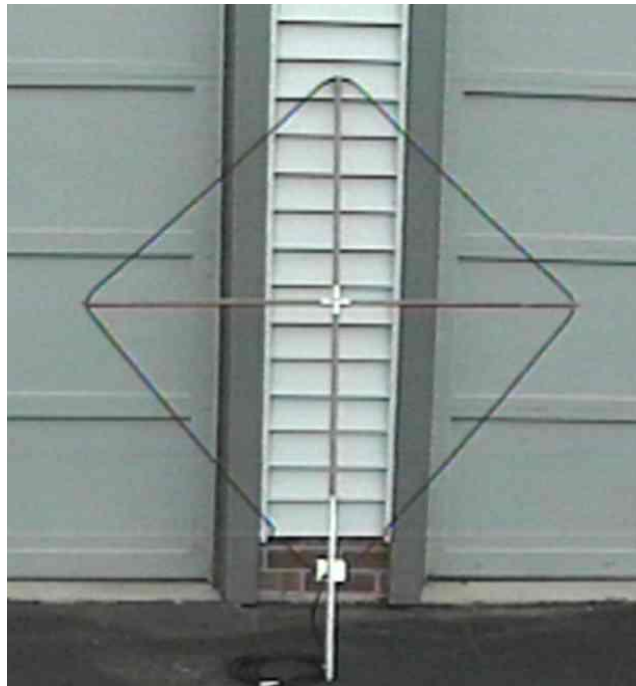
Inexpensive and very easy to build and use

Compact 8 foot diameter

Very deep 2° beamwidth broadside nulls for local RFI suppression

Very broad 150° figure-8 bidirectional 3 dB beamwidth

Poor sensitivity for DX



# Electrically Steerable Loop Arrays



- Two K9AY loops
  - switchable in four directions
  - footprint is only 25 x 25 feet and 25 feet tall
  - 120° 3 dB beamwidth
  - 7 dB RDF
- Shared Apex Loop Array
  - switchable in eight directions
  - footprint is only 50 x 50 feet and 25 feet tall
  - 75° 3 dB beamwidth
  - 8 dB RDF
- **Small loops produce very low signal levels**
  - a high gain, low noise figure preamplifier is essential
  - requires very careful attention to choking unwanted common mode signals
    - choke the coaxial cable feed line and filter the control cable and power cable
    - bury the cables about 12 inches deep for best unwanted signal suppression
- Avoid re-radiated signals from nearby antennas, towers and power lines
  - locate the antenna as far as possible from antennas, towers and power lines



## Two K9AY Loops

**7 dB RDF in only 625 square feet**

very small 25 x 25 foot square x 25 feet high

switchable in four directions

120° 3 dB beamwidth



# Shared Apex Loop Array

## 8 dB RDF in only 2500 square feet

50 x 50 foot square x 25 feet high  
switchable in eight directions  
75° 3 dB beamwidth





# Waller Flag Array – Vertical or Horizontal

## 11 dB RDF in only 30 feet of length

Two small terminated loops with end-fire phasing

For most locations: 14 feet tall and 30 feet long

For quiet locations: 20 feet tall and 50 feet long

At least 100 feet high for horizontal polarization

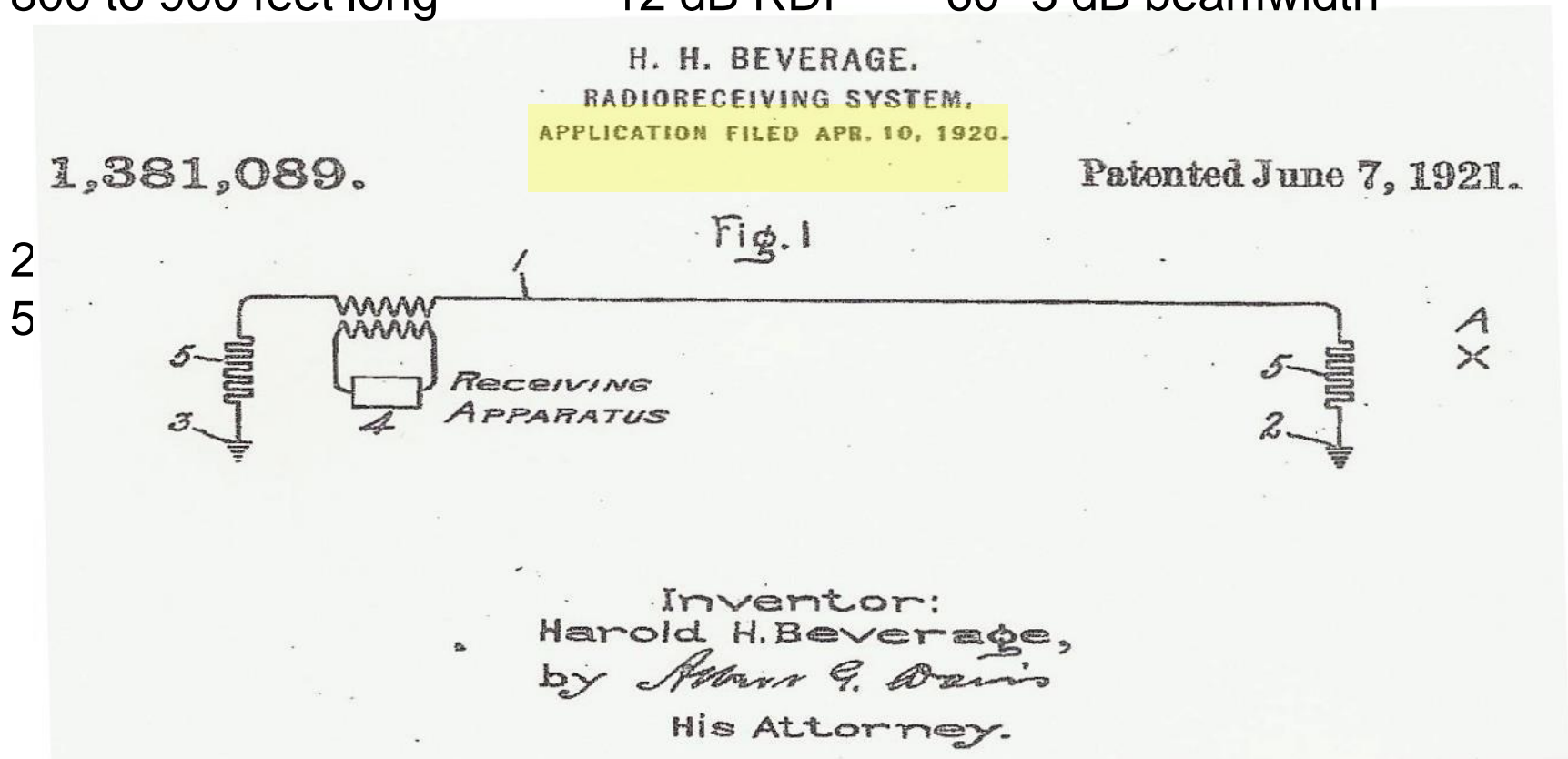
80° 3 dB beamwidth



# Single Wire Beverage

The simplest and most reliable high performance receiving antenna

250 to 400 feet long	4 - 6 dB RDF	100° 3 dB beamwidth
500 to 700 feet long	10 - 11 dB RDF	70° 3 dB beamwidth
800 to 900 feet long	12 dB RDF	60° 3 dB beamwidth





# Beverage on (or near) Ground

## 6 - 8 dB RDF with only 225 feet of length

a good choice when stealth is important

signal levels are *significantly stronger* if the wire is elevated a few inches  
only about 225 feet long -- longer lengths *significantly degrade* performance

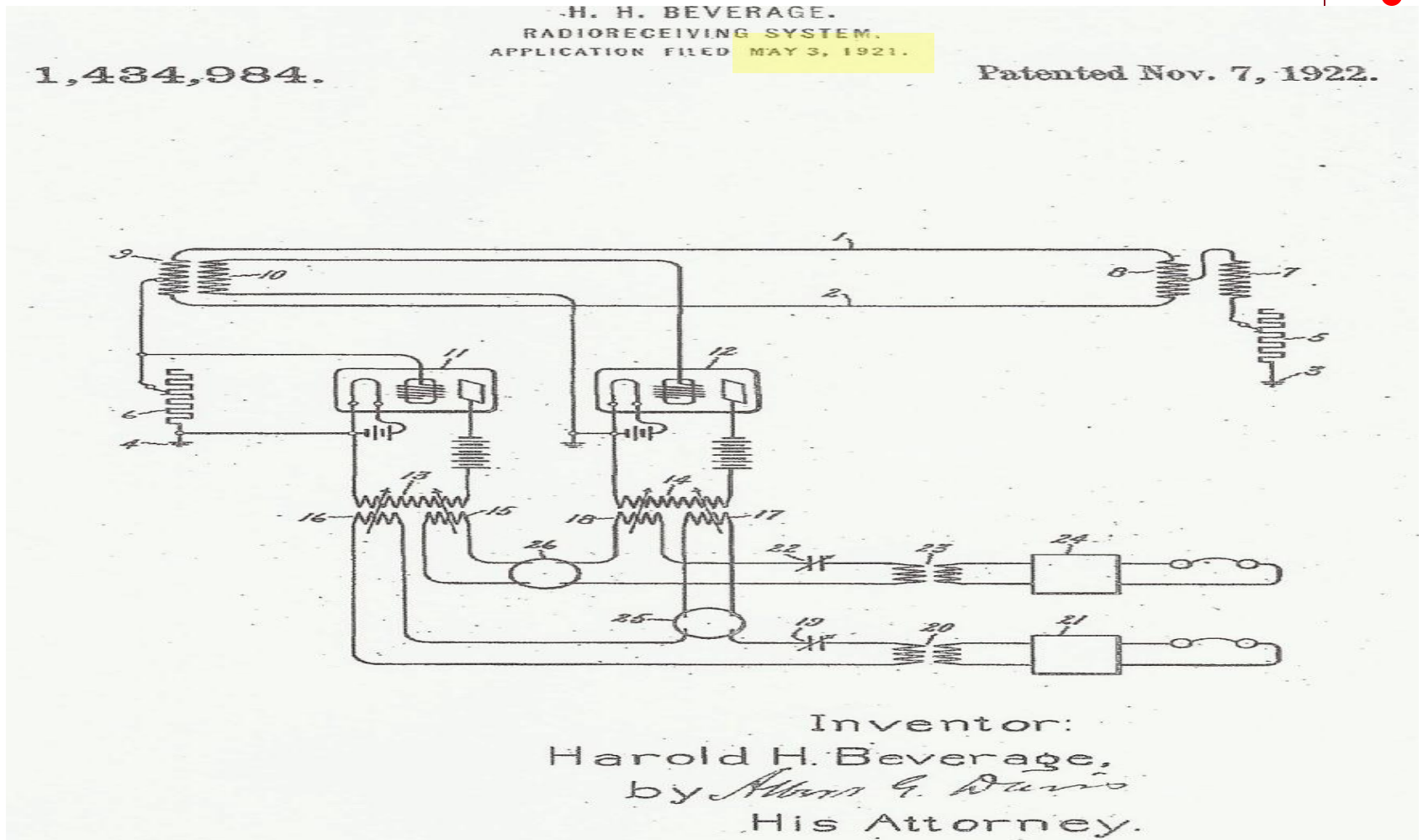
70 - 100° 3 dB beamwidth



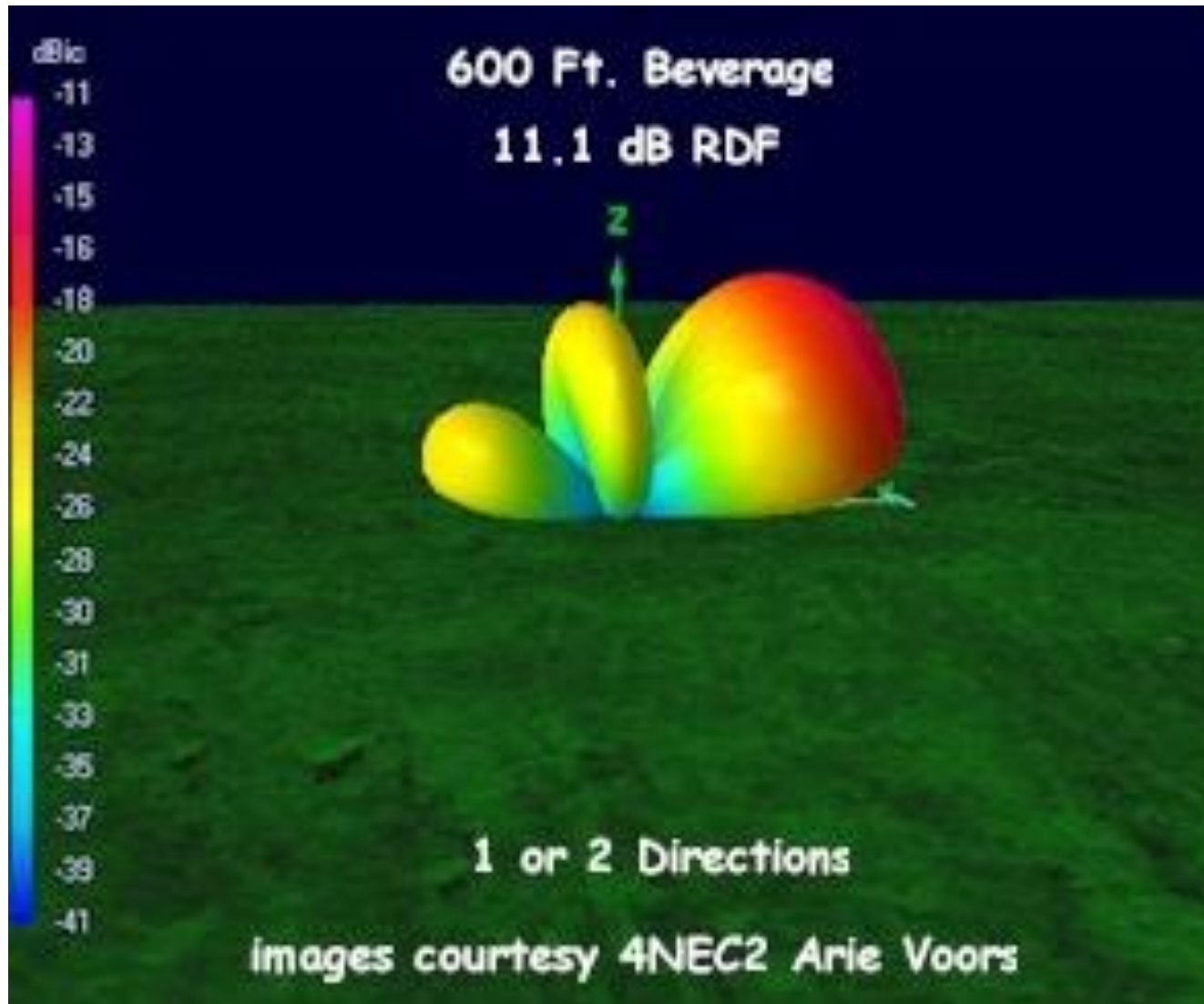


# Two Wire Bi-directional Beverage - 1921

Switchable in two directions with one feed line  
deep steerable rear null if both feed lines feed a variable phase controller



# Radiation Pattern of a 600 Foot Beverage



# Staggered Beverage Array - 1927

## 11 dB RDF on one acre

two or three close spaced, 500 to 600 foot staggered Beverages  
or two or three close spaced 225 foot BOGs -- 7 dB RDF  
enhanced front-to-back ratio compared to a single Beverage or BOG  
the deep rear null can be steered by a variable phase controller



Sept. 1, 1931.

H. O. PETERSON

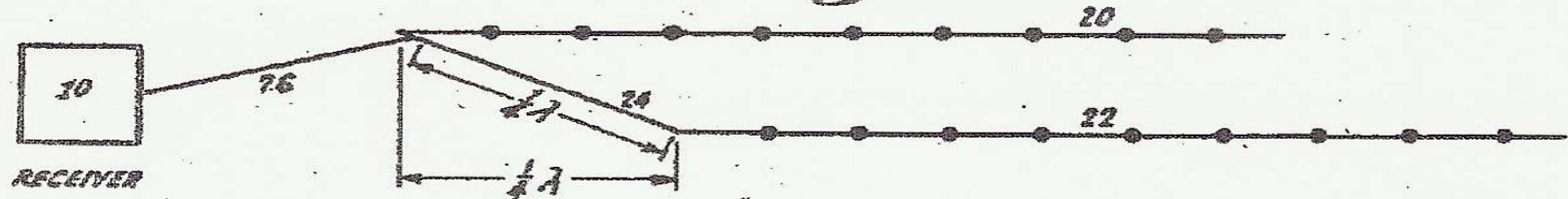
1,821,402

ANTENNA

Filed Nov. 8, 1927

2 Sheets-Sheet 2

*Fig. 7*





# Broadside Pair of Staggered Beverages - 1927

## 14 dB RDF on 8 Acres

800 to 900 foot Beverages, 330 foot broad side spacing

45° 3 dB beamwidth

Sept. 1, 1931.

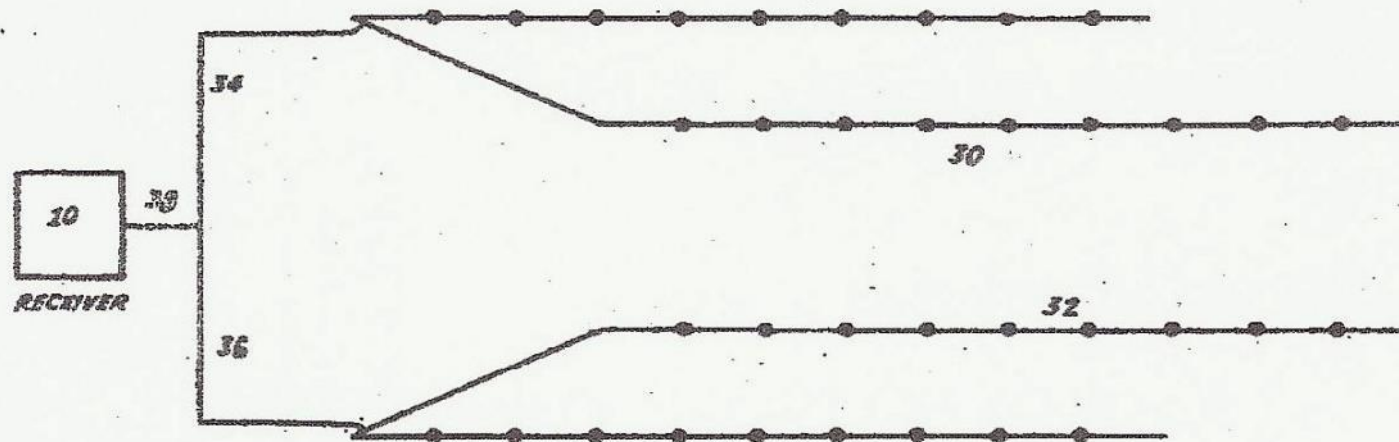
H. O. PETERSON

1,821,402

ANTENNA

Filed Nov. 8, 1927

2 Sheets-Sheet 2



# Phased *High Impedance* Verticals

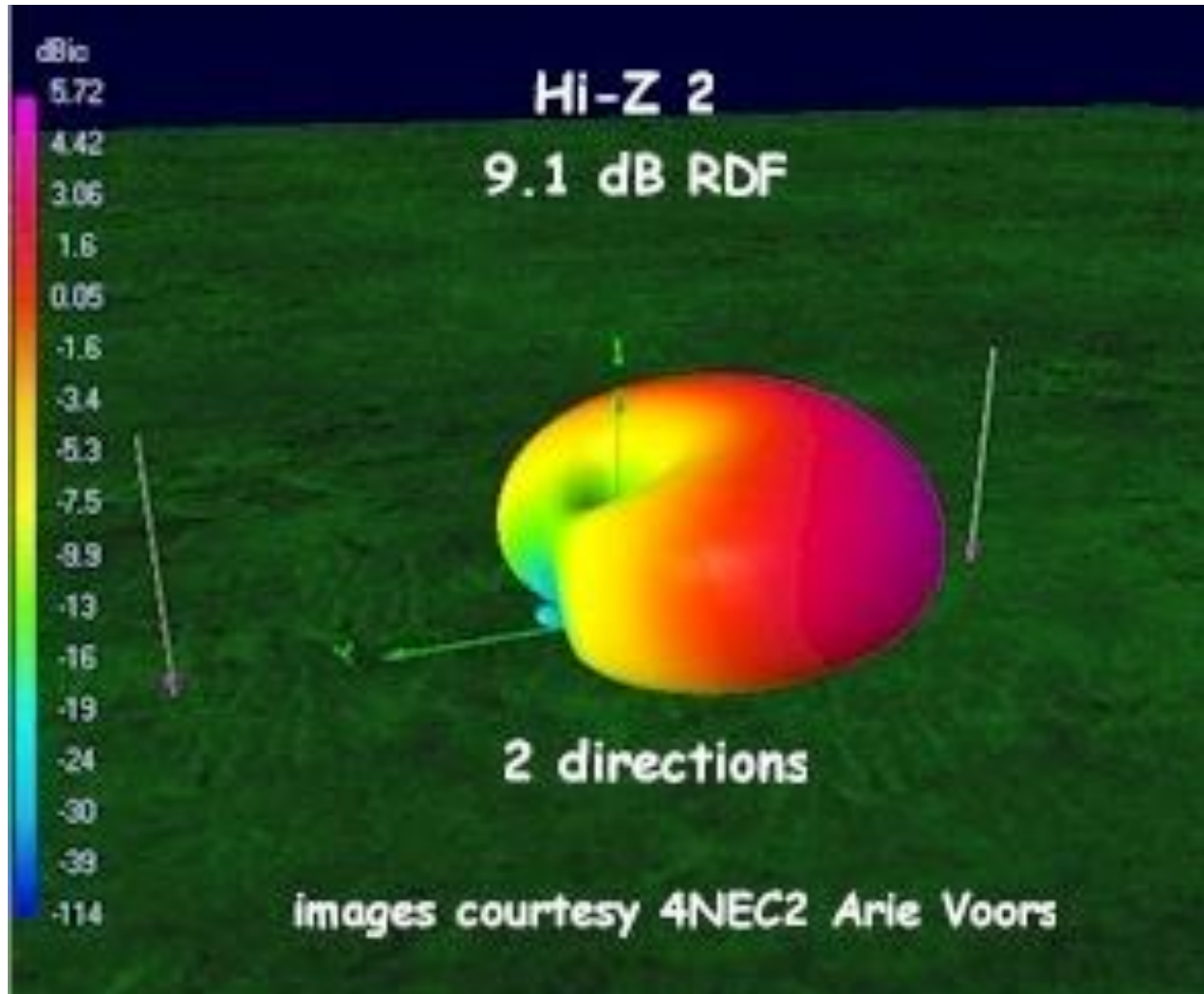
## Two or More 20 Foot Verticals



- No radials
- No umbrella wires
- Dual band operation with compromise 65 foot element spacing
- 80 foot element spacing for improved 160 meter performance
  - closer spacing is possible by using a variable phase controller
- High input impedance amplifier at the feed point of each vertical
  - stray capacitance to nearby trees and other objects, at the feed point of each vertical and at the input to each amplifier must be as low as possible
- Switchable in multiple directions
- Verticals must not be installed within ten feet of nearby objects
  - Avoid nearby trees or any conductive or partially conductive structure
- Avoid re-radiated signals from nearby antennas and power lines
  - locate the antenna as far as possible from antennas, towers and power lines



# Radiation Pattern of a Two Element Array of 20 Foot Verticals



# Electrically Steerable 4-Square Vertical Array

## 12 dB RDF on less than ¼ acre

four high impedance 20 foot verticals

no radials or umbrella wires

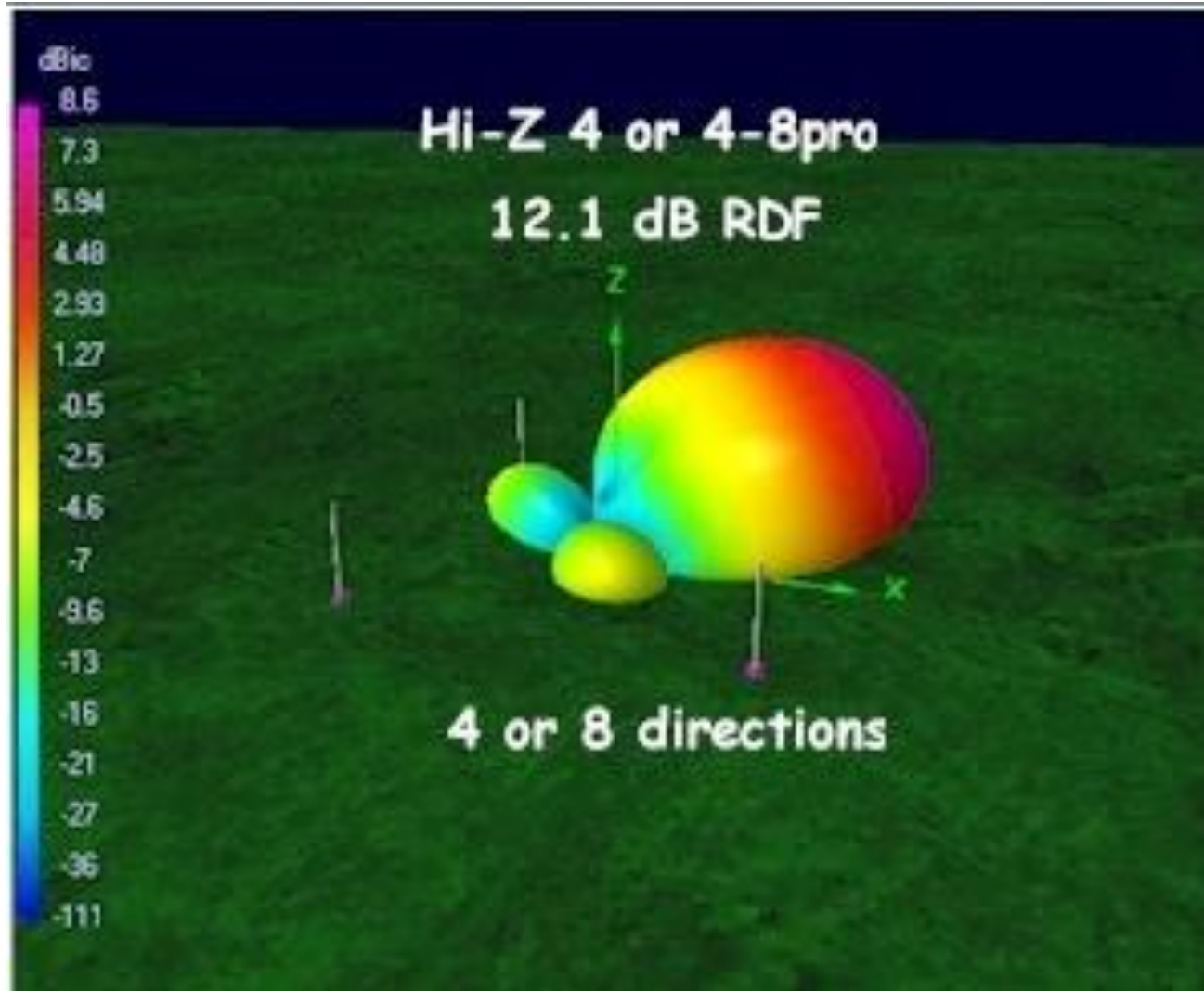
80 x 80 foot square x 20 feet high

high input impedance amplifier at the base of each vertical  
switchable in four directions

100° 3 dB beamwidth



# Radiation Pattern of a 4-Square Array of 20 Foot Verticals



# Electrically Steerable 8-Circle Vertical Array

## 13.5 dB RDF on only $\frac{3}{4}$ acre

eight high impedance 20 foot verticals

no radials and no umbrella wires

requires a high input impedance amplifier at the base of each vertical

only 200 foot diameter array

switchable in eight directions with  $106^\circ$  phasing

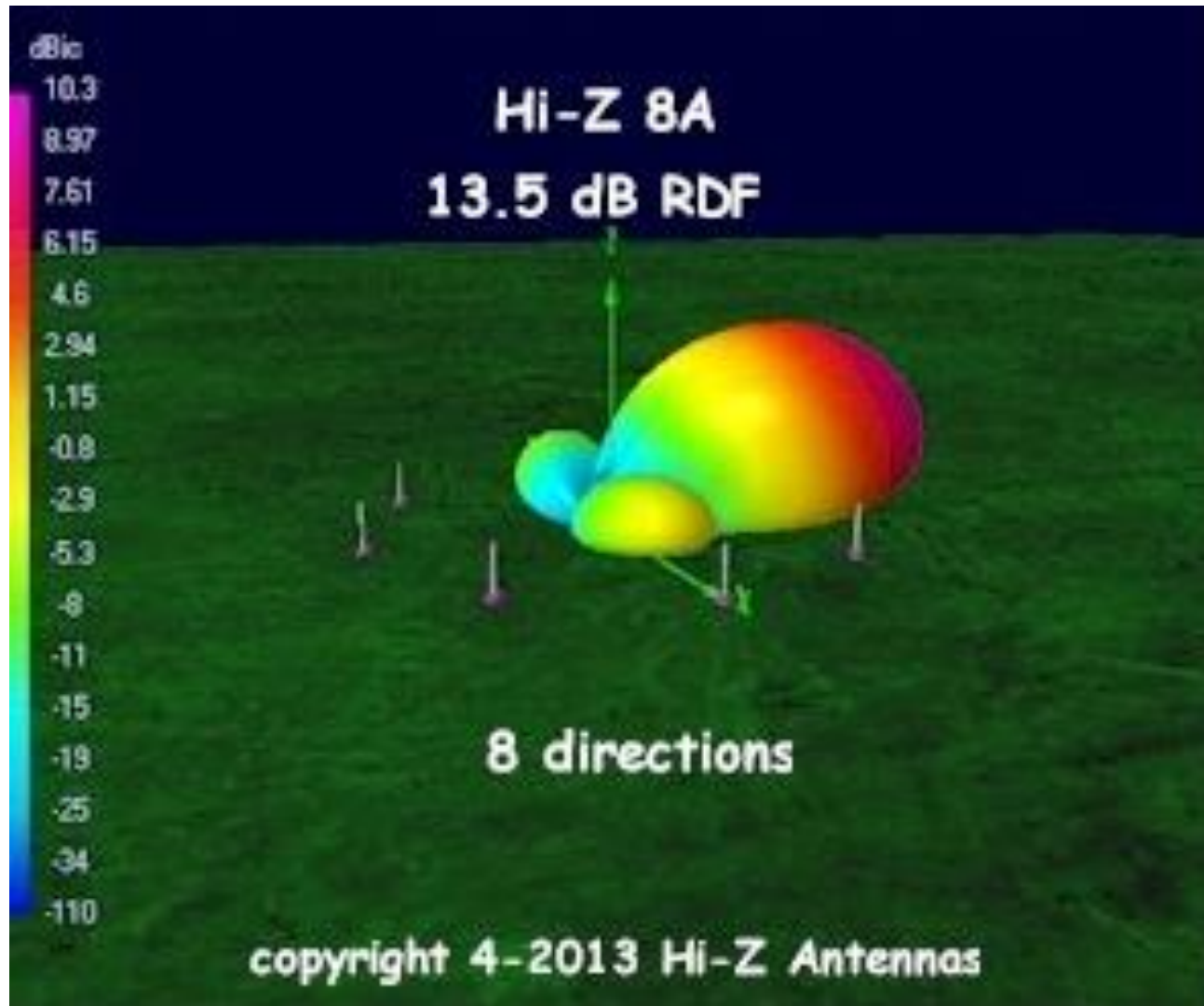
$50^\circ$  3 dB beamwidth, equivalent to a 5 element Yagi







# Radiation Pattern of a 200 Foot Diameter 8-Circle Array



# YCCC Triband Receiving Array

## 12 dB RDF on only ¼ acre



- 3, 5 and 9 element configurations with identical performance
  - switchable in 180°, 90° and 45° steps respectively
  - 80° 3 dB beamwidth
  - slightly wider beamwidth and slightly lower RDF on 80 and 40 meters
- 120 foot diameter array
- No radials
- No umbrella wires
- High impedance amplifier at the feed point of each 20 foot vertical
- A common mode choke must be attached to each feedline where it connects to the controller
- Install at least 10 feet from nearby trees and metallic structures
- Avoid re-radiation from nearby towers, antennas and power lines
  - locate the antenna as far as possible from other antennas and power lines

# Phased *Low Impedance* Verticals

## Two or More 25 Foot Monoband Umbrella Verticals



- Short radials are required at the base of each vertical
  - eight 70 foot radials, sixteen 35 foot radials or chicken wire
  - randomly laid on the ground or shallow buried, symmetry is not important
- Four 25 foot umbrella wires attached to the top of each vertical
  - umbrella wires reduce antenna height and improve array bandwidth
  - *if necessary*, use 35 foot verticals with no umbrella wires
- As little as 65 foot element spacing
  - but more difficult to achieve stable, repeatable performance with small spacing
- Amplifiers not needed at the base of each vertical – higher reliability
- Switchable in multiple directions
- Very easy and low cost to homebrew your own antenna
  - large diameter arrays are very tolerant of moderate amplitude and phase errors
- Low impedance verticals are tolerant of nearby trees and buildings
- Avoid re-radiated signals from nearby towers, antennas and power lines
  - locate the antenna as far as possible from other antennas and power lines

# Electrically Steerable 4-Square Vertical Array

## 12 dB RDF on $\frac{1}{4}$ acre

four *low impedance* 25 foot umbrella verticals

four 25 foot umbrella wires attached to the top of each vertical

eight 70 foot or sixteen 35 foot radials per vertical

65 x 65 foot square footprint plus additional space for radials

switchable in four directions

easy and inexpensive to build

100° 3 dB beamwidth



◦ CTU ◦

CONTEST  
UNIVERSITY

[www.iv3prk.it/user/image/site2-rxant.prk\\_4-square\\_1.pdf](http://www.iv3prk.it/user/image/site2-rxant.prk_4-square_1.pdf)

ICOM



# Electrically Steerable 8-Circle Vertical Array

## 13.5 dB RDF on four acres

eight low impedance 25 foot umbrella verticals

four 25 foot umbrella wires installed on each vertical

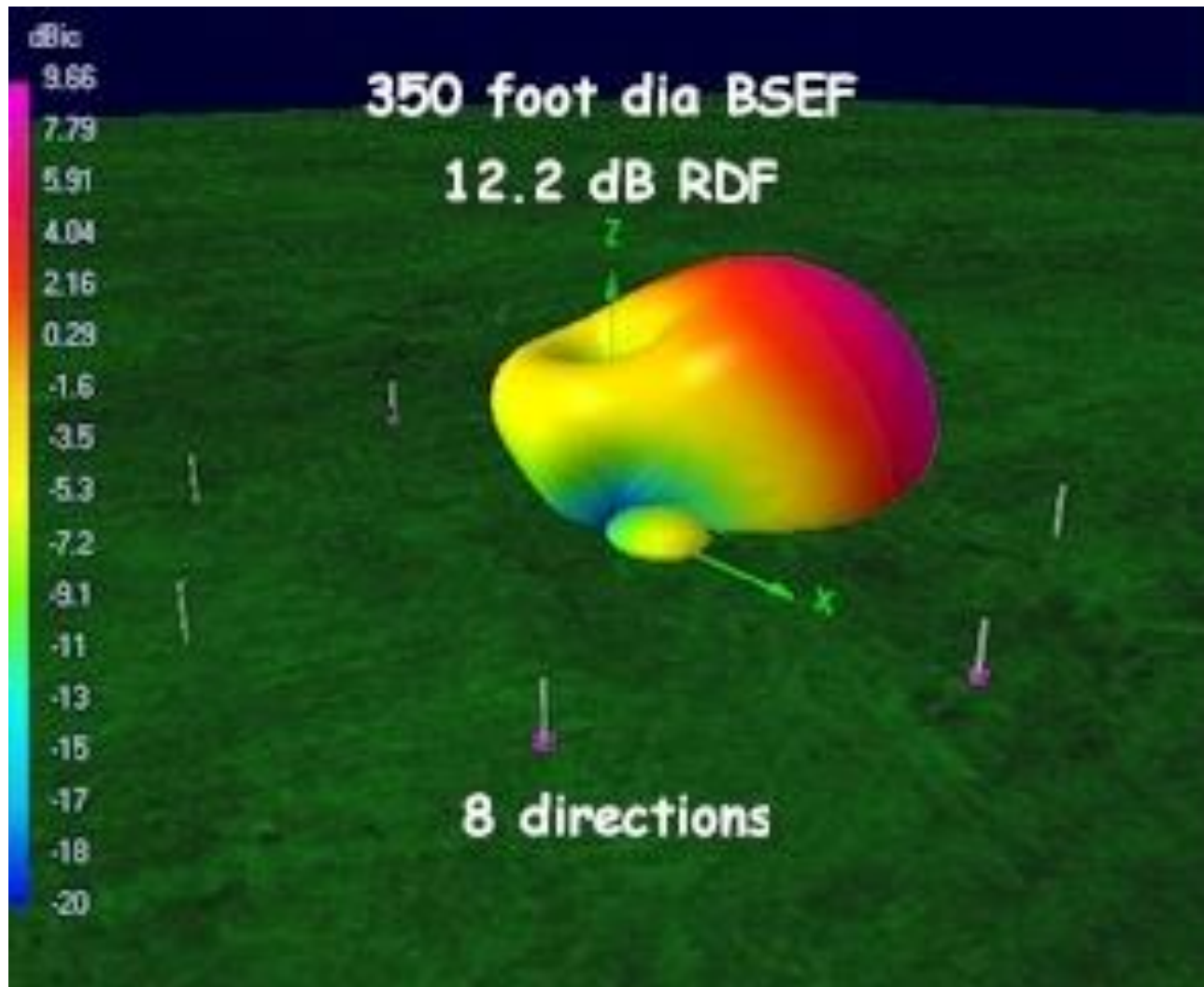
eight 70 foot or sixteen 35 foot radials installed under each vertical  
350 foot diameter with 1/4 wavelength spacing plus space for radials  
or only 200 foot diameter with a Hi-Z 106 degree phasing controller  
switchable in eight directions

Very easy and inexpensive to build

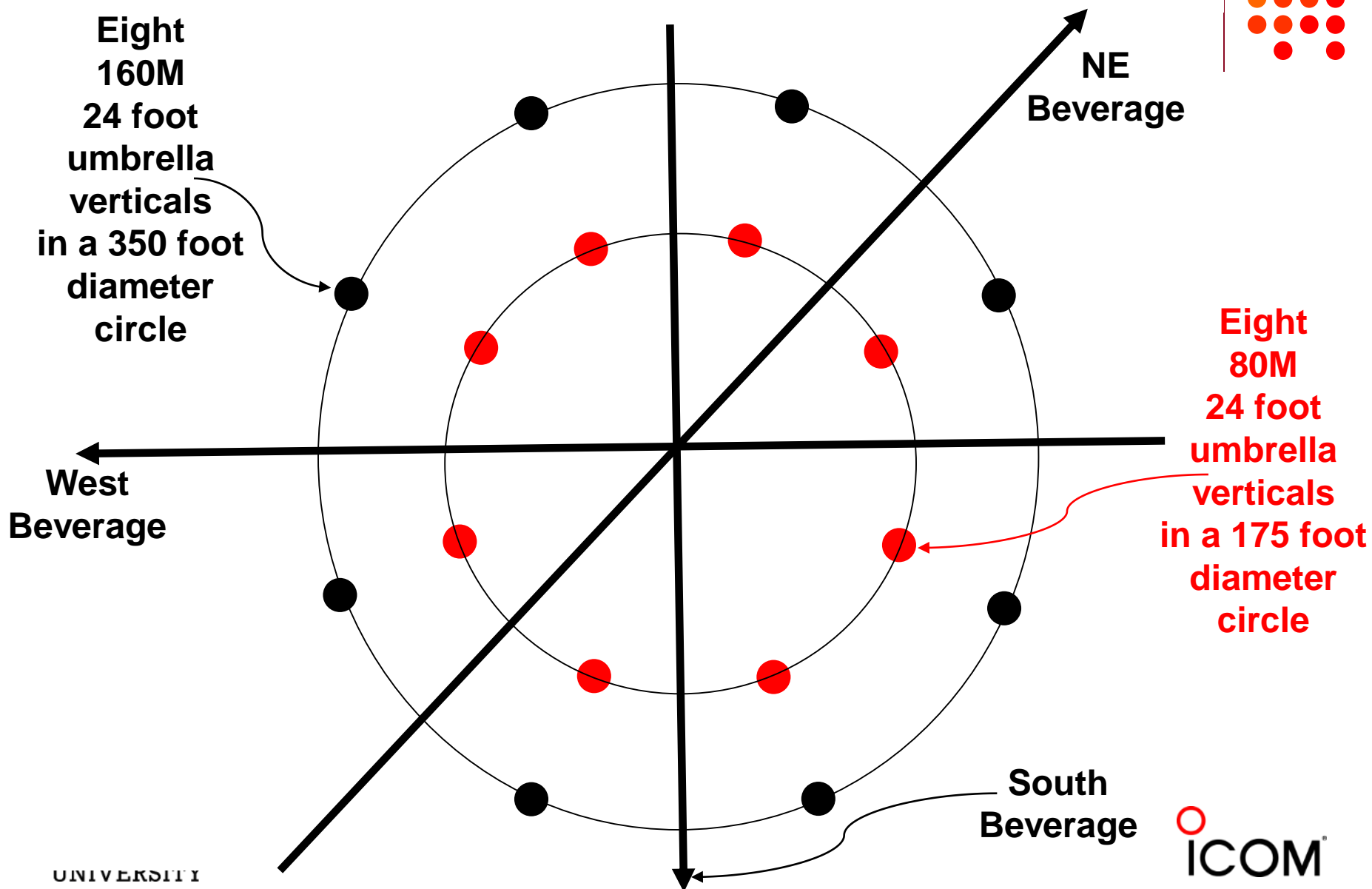
50° 3 dB beamwidth, equivalent to a 5 element Yagi



# Radiation Pattern of a 350 Foot Diameter 8-Circle Array



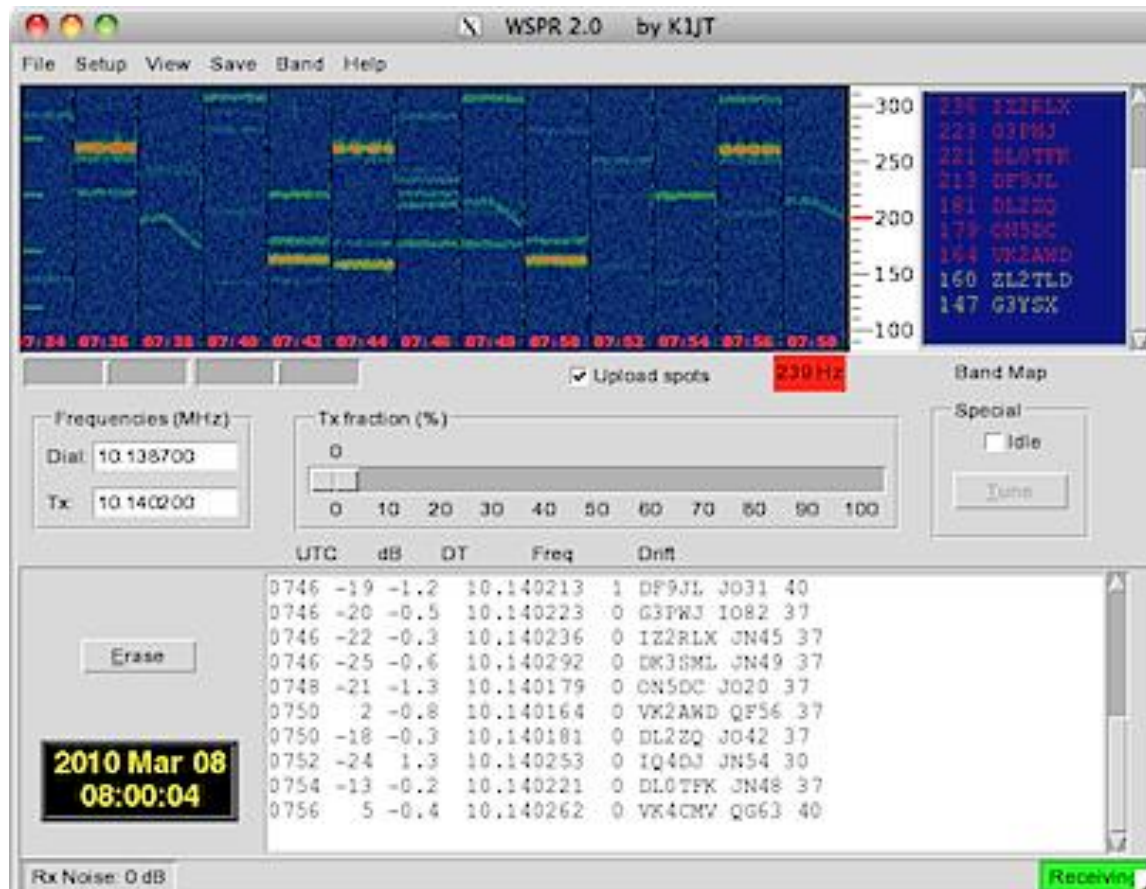
# 160 and 80 Meter Receiving Antenna Layout at W3LPL



# Quantitative Performance Evaluation Using K1JT's WSJT-X



Use two instances of WSPR or FT-8  
to compare the performance of two receiving antennas



# Receiving Antenna Variable Phasing Controller

## DX Engineering NCC-2



Combines the inputs from two antennas

- creates a directional pattern with deep steerable nulls
- optimizes the performance of phased Beverages and phased verticals
- very well engineered and exceptionally easy to use





# Phase Synchronous Diversity Reception

two widely spaced antennas (500 to 1000+ feet) feeding  
two identical high performance phase locked receivers

