



PVRC Newsletter

November 2014

Sweepstakes!

And CQ WW CW!

President's Letter – Ken KE3X

As I write this column only 3 days remain until Sweepstakes CW. In this column I would like to address the 'Micro' (Tips for Sweepstakes CW) and the 'Macro' (How Do We Stay Motivated in Year 7').

The 'Micro' – Tips for Sweepstakes CW

Over the years our resident SS experts have accumulated a wealth of information located [here](#):

A few additional tips for CW contesting:

1. When S&P'ing, try using a wide 2.8kHz filter. This allows you to hear 3-4 signals at the same time, and know

where each station is in their QSO sequence. Pick the one who is signing clear and dump in your call once. If he comes back, great – you got him! If he does not, you were already listening to two other stations +300 hz and -300 hz, therefore you already know which one is signing clear, to call them. This way you avoid waiting the 30 seconds for QSO #1 to finish.

Some simple math: if you save 15 seconds each time you work Station #2 faster instead of waiting for Station #1 to finish, and you normally S&P at 50/hour, you just turned a 50-hour into a 65-hour. Over 10 hours, that's 150 extra QSO's.

2. Using N1MM, in the free-form entry field, enter the Number and Precedence **without** a space between them! N1MM

will pre-fill the Check and Section for you. Entering the Number and Precedence as '54A' ... not '54 (space) A' ... tells the logging program that '54' is the Number, not the Check. This avoids having to visually confirm each field made it into the proper column in your log.

3. On Sunday, try these strategies depending on 1-radio or 2-radios:
1-radio: Alternate CQ'ing and S&P'ing in equal increments.
2-radio: Alternate Dual-CQ with Single-CQ and S&P'ing on Radio 2.

This will help maximize your rate, since you will capture 'casual ops' who A) only CQ, as well as B) only S&P. Casual ops can be found in both flavors!

The 'Macro' – How Do We Stay Motivated in Year 7?

When we start beating the Sweepstakes drum each October, I always chuckle at the Reflector responses which range from "Awesome – SS season!" to "Oh no ... not another one!" I fully appreciate both perspectives: one the one hand, Sweepstakes has a long and storied tradition which brings out the faithful annually ... yet as 'contest events' go, you can only work a station once, so for a 'rate junkie' like myself I find it hard to stay motivated on Sunday afternoons. Here are some suggestions as we go for Sweepstakes Win #7 In a Row:

1. Pick a contest-within-a-contest. Beat your Personal Best score from last year, or ever.
2. Put a case of beer on the line and challenge a friend across town with a similarly-equipped station.
3. When all else fails, watch football! I already know the Redskins play the Vikings at 1PM this Sunday. What is more fun than watching two 3-5 teams

battle it out when your 'CQ Repeat' is running? Turn on the 'Closed Captioning' and Go Skins! (Sorry, NC Chapter members ... the Panthers play the Saints on Thursday night this week ... you'll just have to root for the Redskins, which will be nice, since they need all the help they can get!)

4. Consider this quote from tennis player Arthur Ashe: "You are never really playing an opponent. You are playing yourself, your own highest standards, and when you reach your limit, that is real joy."

5. Better yet, consider this quote from soccer star Mia Hamm: "Somewhere behind the athlete you've become and the hours of practice and the coaches who have pushed you is a little girl who fell in love with the game and never looked back... play for her."

6. Consider history: Sweepstakes dates back to 'The January Contest' announced in December 1929 QST (courtesy of John K3TN, full details [here](#)). I was first introduced to ham radio by my Great-Uncle Bob Fairchild, K4FG, ex-8BMQ, first licensed in 1921. It's a fair bet he participated in the first Sweepstakes ever, in 1930. Now I get to participate in the same event 84 years later!

A Moment of Thanks

October 31 ends the nomination period for the 2015 Officer and Trustee slate, and you will notice I am stepping down as your President after only one year. The recent departure of my two oldest sons off to college has been a stark reminder I need to refocus my attention on sons #3 and #4 while they still live under my roof! Childhood is fleeting and I am cutting back on several administrative commitments to create more time for family in 2015.

I would like to thank my fellow Board members ... Bill, Bud, Ethan and Alan ... for their hard work, wisdom and patience this year as we tackled various projects to move the club forward.

Gentlemen – you are a class act and I leave the club in capable hands.
Hope to see you in my log this weekend ... and Go PVRC!

Ken KE3X



PVRC Officers:

President: KE3X Ken Low
Vice President: K8GU Ethan Miller
Vice President: W3LL Bud Governale
Secretary: AA4FU Al Knight
Treasurer: N3RR Bill Hider

Trustees:

K3MM, N3OC, WX3B, W4ZYT, N4NW, K2AV, N4ZR,
K4ZA, K3WRY

PVRC Charter Members (all SK):

W3GRF, W4AAV, W4KFC, N0FFZ, W4LUE, W7YS,
VP2VI/W0DX, W3IKN, W4KFT

PVRC Website: <http://www.pvrc.org>

Sweepstakes Resources – John K3TN

Dates/times: CW: First full weekend in November (**November 1-3 2014**). Phone: Third full weekend in November (**November 15-17, 2014**). Contest Period: Begins 2100 UTC Saturday and runs through 0259 UTC Monday.

List of ARRL sections - [here](#)

Call History files – check out the PVRC NC site [here](#)

Log Due Dates – 15 days after each contest: November 18th for CW, December 2nd for SSB.



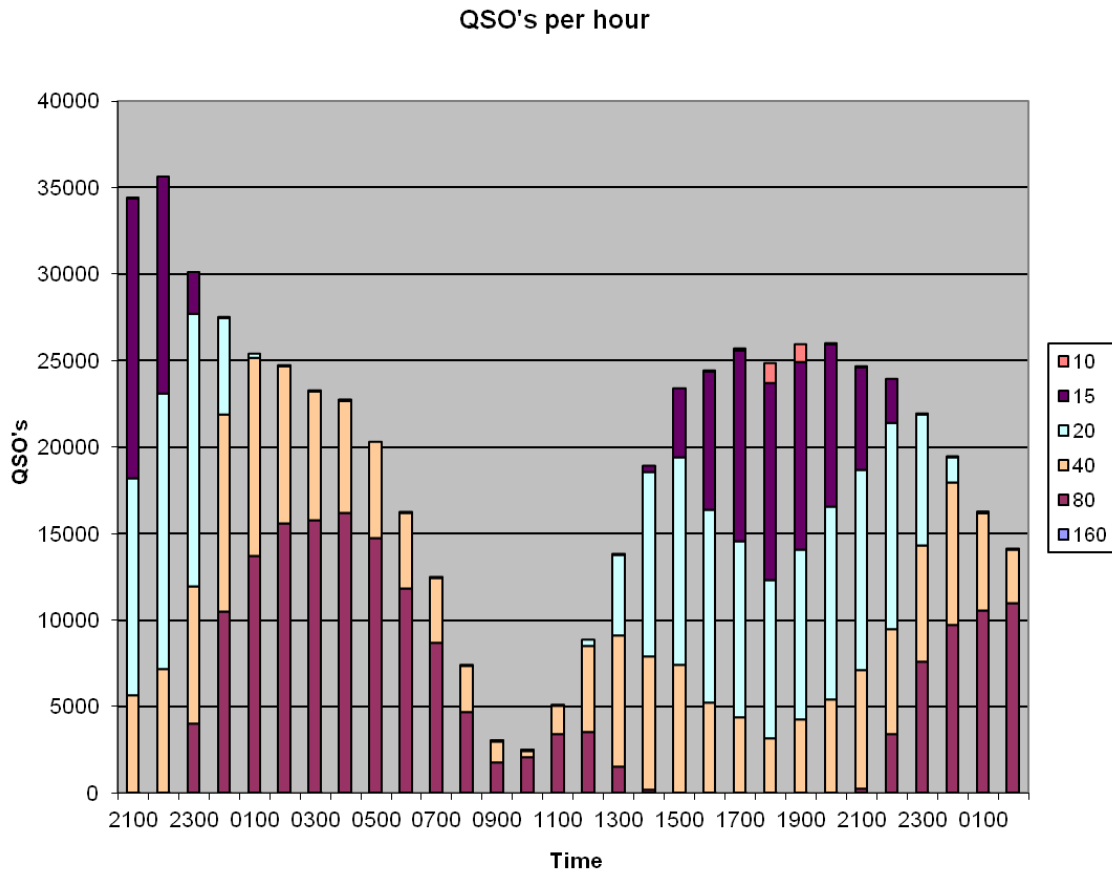
A pretty good N1MM Function Key file for SS CW

F1 RUN CQ,<ss> K3TN K3TN <ss>
F2 Exch,#~B * 69 MDC
F3 TU,TU *{CLEARIT}
F4 K3TN,*
F5 HIS Call,!
F6 QSO B4,B4 *
F7 NR,# B
F8 ?,?
F9 NR?,NR?
F10 CK?,CK?
F11 Sec?,SEC?
F12 Wipe,{wipe}

F1 S&P CQ,<SS> ** <ss>{CLEARIT}
F2 EXCH,#~B * 69 MDC
F3 SEC,MDC
F4 K3TN,*
F5 HIS CALL,!
F6 CK,69

What Band Should I Be On? – One of the biggest decisions in any contest is what bands to be on and when? Domestic contests are very different than DX tests, and the “work once per contest” rule in SS really changes things, too,

Hunters and fisherman learn to go to where the deer and the fish are to get the best results, and the chart below shows on what bands the most SS CW QSOs are made at what time of day.



Source: N2IC and ARRL QST June 2010

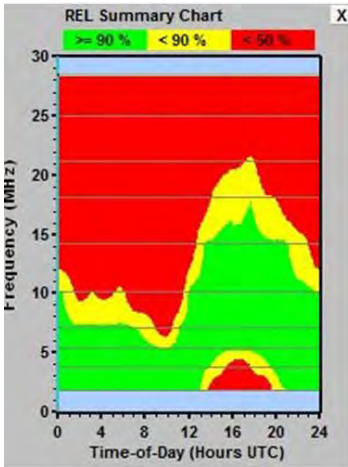
You can see several things immediately from this data:

1. Keep that butt in the chair for at least the first nine hours.
2. The 0900-1000Z hours are definitely good off time choices.
3. The last two hours are yawners – more good off time.
4. 80 and 40 are the bread and butter bands.
5. 10 and 15 being open siphon activity from 20 and 40.

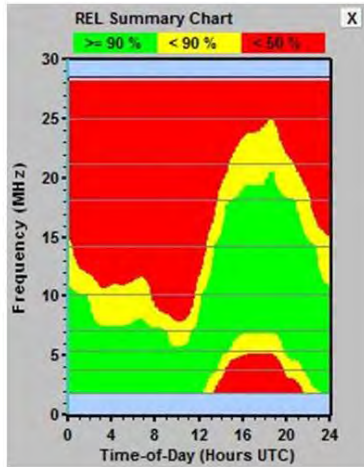
Another way to look at the “What Band Should I Be On?” question is to look at propagation models. Below are some ACE HF runs showing path reliability by frequency for the CW Weekend with likely solar conditions. The first show predicted path reliability for 100w and a dipole, the second is for a KW and a tribander.

You can see why 20/40/80 are the money bands for PVRC stations. It also shows why spending a lot of time on 10m is not a great idea.

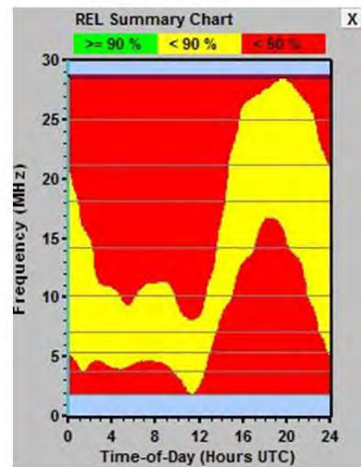
Sweepstakes paths for 100w and a dipole station



DC to Chicago

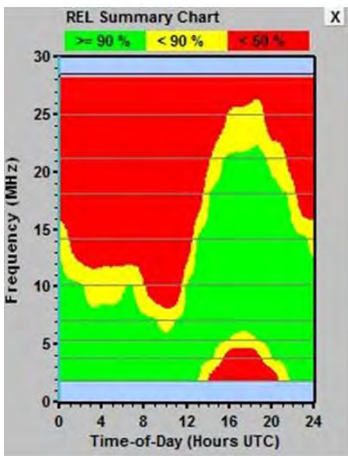


DC to Boston

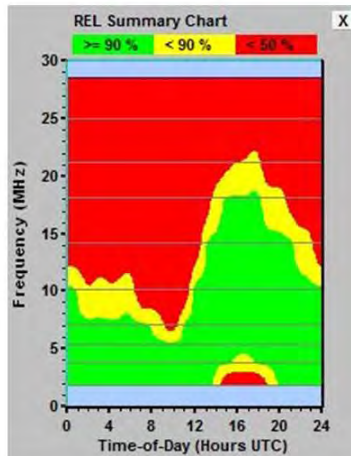


DC to California

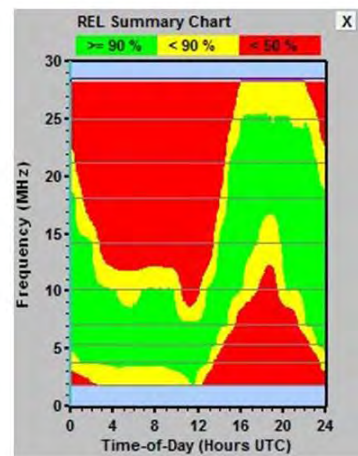
Sweepstakes paths for Kw and tribander station



DC to Chicago



DC to Boston



DC to California

W1AW/3 (DC) Operation – Eric W3DQ

It was an amazing experience. Some thought that being a "sticker state" there wouldn't be much, or as much, interest. **HA!** We saw pileups none of us had ever experienced from this part of the world. If you divide the total of Q's by the hours we were on (115 hours, depending on the way you counted) , the average rate was over 100/hr!

Ken, KE3X operated his station solo on all the bands, either before or after work. I had 8 ops -- including my 90 minutes -- made up of retirees, self-employed folk, and those who didn't have stations of their own. We were on all bands (including N8HM on the satellites from my backyard) except 30 meters. NN3RP was solo, too. Rafa was RTTY only from a really RF noisy part of the city (Adams Morgan, overlooking downtown).

We all have similar, modest urban stations -- A small tribander (F12 C3 or C3-SS) and wires. Ken and Rafa have kw amps, mine is a 500 watter. What we all had in common was enthusiasm, stamina, and in the end... a lot of fun!



Art K3KU operating W3DQ as W1AW/3 in Washington DC

From the Wayback Machine – Fred K3ZO

I found the photo below in my files.



Standing: (L-R) K4GKD N6ZZ K7ZZ K7ZZ's gf N4??? Seated K3ZO.

This was at Dick Klein's old QTH near Manassas. Don Riebhoff was goofing off as usual with the false eyes. Sadly all three of those guys are now no longer with us. Don's girlfriend was working at the American Embassy in Madrid when Don was working at the American Embassy in Lisbon. They had spent a weekend at the beach along the Mediterranean coast and Don had just dropped her off at the airport in Sevilla so she could fly back to Madrid, and was headed back by road to Lisbon when he attempted to pass a long line of trucks on a two-lane road and didn't quite make it to the end.

Membership News – Bud W3LL

PVRC added a boatload of new members since the last newsletter. Please welcome:

- Rich K3YNY, Dave KE4S in the Northwest Chapter.
- Wayne KU4V, Tucker KK4UNZ in the North Carolina East Chapter
- Andy KR4FS, John K4LBG, and Bill WD4EXG in the Southwest VA Chapter
- Bruce N7TY, Chris KC3DIG, Eudora KC3DQB and Lee N8HTG in the Southern MD Chapter
- Bill K4MI in the Colonial Capital Chapter
- Nick KK4ODQ and Curt KK4ODR in the Central Chapter
- Bob NC4RG, Andy NC4AG and Jim W4UX in the North Carolina West Chapter
- Rich W6LWG and Gary K4GTF in the Rappahannock Chapter

Chapter leaders please remember to complete the [Meeting Attendance Report](#).

Upcoming Contests and Log Due Dates

Contests This Month

- **Nov 1 – CW Sweepstakes!**
- Nov 8 – WAE RTTY
- Nov 8 – OK/OM CW
- Nov 15 – LZ DX
- **Nov 15 – SSB Sweepstakes!**
- **Nov 29 – 30 – CQ WW CW**

Logs Due This Month

- Oct 31 – CQ WW SSB
- Nov 4 – UBA ON
- **Nov 18th – CW SS**

See WA7BNM's [Contest Calendar](#) for more detail and the latest information.

From the PVRC Treasurer – Bill N3RR

PVRC has chosen not to implement an annual Dues requirement. We depend on the generosity of all of our club members to finance our annual budget. In addition, active PVRC members are expected to participate and submit logs for at least two PVRC Club Competition contests per year.

When contemplating your donation to PVRC, each member should consider the benefit you are receiving from PVRC and its many opportunities for your personal growth in our wonderful hobby, then donate accordingly.

Direct donations to PVRC via Credit Card or PayPal may be made by clicking this "Donate" button and clicking the next Donate button that appears on your screen:



The Editor's Last Word – John K3TN

If the Internet gods cooperate, I'll be operating VY1EI remotely in CW SS and helping the deserving get the NT section on CW. If the propagation gods cooperate later in the month, the phenomenal conditions we saw in CQ WW SSB will show up for the cape di tutti capo of all contests, CQ WW CW. Either way, for the December newsletter send in your pictures, thoughts, soapbox write-ups, gripes, whatever.

As always, send any contributions to jpescatore at aol dot com.

Eyeball QSO Directions

The latest info on local club meetings and get together will always be sent out on the [PVRC reflector](#) and posted on the PVRC [web site](#).

NW Region: Meetings are generally held on the third Tuesday of each month at the Golden Corral Frederick, MD
5621 Spectrum Dr.
Frederick, MD 21703
PVRC Meets in the BANQUET ROOM
(301) 662-5922

From Interstate 270 south of Frederick, MD
take MD Route 85, "Buckeystown Road" NORTH.
First right on Spectrum Drive.
Restaurant is in a couple of blocks. Most arrive about 6 PM for dinner and informal discussions. The meeting begins at 7:00 PM.

Contact: Jim [WX3B](#)

Central Region: Meets monthly the second Monday of each month, except June, July & August). The location alternates between the below MD and VA locations. Pre-meeting dinners start at 6:00 pm and meetings start at 7:30 pm.

VA LOCATION: Anita's, 521 E. Maple Ave, Vienna, VA. Tel: 703-255-1001. Meets at this location during the months of February, April and October.

Contact: Rich [NN3W](#)

MD LOCATION: Max's Café. 2319 University Blvd W, Wheaton MD 20902. Tel: 301-949-6297 People usually begin arriving at the restaurant around 6:30. Meets at this location during the months of January, March, May, September and November. Contact: Art [K3KU](#)

The Laurel, MD Region: Bill N3XL The PVRC get-together is held at the first [LARC](#) meeting each quarter at the clubhouse.

The Annapolis Crew: Dan K2YWE Meetings are held on the 4th Wednesday of each month at Broadneck Grill in Annapolis. We gather at about 5:30 PM and order dinner about 6. We break up usually before 8 PM. E-Mail [K2YWE](#) to be put on the e-mail reminder list.

PVRC-NC: The PVRC NC-East chapter meetings are held at [Manchester's Bar and Grill](#) on the 9100 block of Leesville Rd. in North Raleigh, with "QRM" beginning at 6:00pm and the dinner meeting following shortly thereafter. The meeting is held monthly on the 1st Thursday of most months, cancellations or changes usually announced on the [PVRC-NC website](#). [The PVRC NC-West Chapter](#) holds its meetings on the 4th Monday of each month at [the Mellow Mushroom](#), 314 W. 4th St., Winston-Salem, NC. Ragchew at 7:00pm, dinner meeting starts at 7:30pm. All contesters and interested guests are invited!

Over the Hill Bunch: The group meets for lunch at noon alternately in Maryland at the College Park Holiday Hotel Route 1 and the Beltway or in Virginia at the Parkview Marriot near route 50 and the Beltway. Meetings generally are held on the last Wednesday of the month and are subject to change. Meetings are announced by E-Mail. All PVRC members, non-members interested in membership and guests are welcome. For information contact Roger Stephens, K5VRX, 703-658-3991 for Virginia meetings; or Cliff Bedore [W3CB](#) or get on 147.00 for Maryland meetings.

Downtown Lunch Group: Meets on the 3rd Wednesday or Thursday of the month in the downtown area of Washington, DC. Locations occasionally change, but are always Metro accessible. Details are sent out on the PVRC reflector. Feel free to contact Eric W3DQ or Brian WV4V for details and directions.

Southwest VA Chapter: The Southwest VA group meets each Wednesday at about 8:30 AM at Hardees at 20265 Timberlake Road in Lynchburg, VA. This is an informal gathering, but normally has about 10-12 attendees. Contact Mark Sihlanick N2QT, Tel: 434-525-2921

Southern Maryland Chapter: We meet on the last Wednesday of each month at Nicolletti's Pizza located at: 22741 Three Notch Road, California, MD 20619 Phone: 301-863-2233. Check out their menu [here](#).

Talk-in on 145.350 (-) PL-156.7

Meet and Eat 6:30 – 7:30, PVRC meeting afterwards.

Contact the Chapter Chair, Tom Shelton, ND3N at GL1800Winger<at>Verizon<dot>net or (240) 434-3811 with any questions

If you'd like to add or correct a listing, contact K3TN for inclusion in the Newsletter!

Now a Word From Our Sponsors

PVRC doesn't ask for dues, but the Club does have expenses. Please donate online [here](#). You can also support the Club by buying from the firms listed who advertise in the newsletter, or by getting your company to sponsor the newsletter!

QSL CARDS By LZ1JZ

WWW.LZ1JZ.COM



By Scott KA9FOX

- Free Ham Radio Classifieds (most popular ham swap site)
 - Low Cost Web Hosting, Email & Domain Name Services
 - Web Design & Development
- <http://www.QTH.com>**



Your source for DX News!

The Daily DX - is a text DX bulletin that can be sent via e-mail to your home or office Monday through Friday and includes DX news, IOTA news, QSN reports, QSL information, a DX Calendar, propagation forecast and much, much more. With a subscription to The Daily DX you will also receive DX news flashes and other interesting DX tidbits. *Subscriptions are \$49.00 for one year or \$28.00 for 6 months.*

The Weekly DX - is a product of The Daily DX that can be sent weekly to your home or office via e-mail in the form of a PDF (portable document format). It includes DX news, IOTA news, QSN reports, QSL information, a DX Calendar, propagation forecast and graphics. *Subscriptions are \$27.00 for one year.*

Get a free two week trial of The Daily DX and The Weekly DX by sending a request to bernie@dailydx.com.

The Daily DX
3025 Hobbs Road
Glenwood, Maryland 21738
Phone: 410-489-651
Skype w3ur-bernie

ANAHEIM, CA
(Near Disneyland)
933 N. Euclid St., 92801
(714) 533-7373
(800) 854-6046
Janet, KL7MF, Mgr.
anaheim@hamradio.com

BURBANK, CA
1525 W. Magnolia Blvd. 91506
(818) 842-1786
(800) 854-6046
Eric, KA6IHT, Mgr.
Magnolia between
S. Victory & Buena Vista
burbank@hamradio.com

OAKLAND, CA
2210 Livingston St., 94606
(510) 534-5757
(800) 854-6046
Mark, W7YN, Mgr.
I-880 at 23rd Ave. ramp
oakland@hamradio.com

SAN DIEGO, CA
5375 Kearny Villa Rd., 92123
(858) 560-4900
(800) 854-6046
Tom, KM6K, Mgr.
Hwy. 163 & Claremont Mesa
sandiego@hamradio.com

SUNNYVALE, CA
510 Lawrence Exp. #102, 94085
(408) 736-9496
(800) 854-6046
Dan K6DN, Co-Mgr.
Howard, W6HOC, Co-Mgr.
So. from Hwy. 101
sunnyvale@hamradio.com

NEW CASTLE, DE
(Near Philadelphia)
1509 N. Dupont Hwy., 19720
(302) 322-7092
(800) 644-4476
Rick, K3TL, Mgr.
RT.13 1/4 mi., So. I-295
newcastle@hamradio.com

PORTLAND, OR
11705 S.W. Pacific Hwy.
97223
(503) 598-0555
(800) 854-6046
Leon, W7AD, Mgr.
Tigard-99W exit
from Hwy. 5 & 217
portland@hamradio.com

DENVER, CO
8400 E. Hill Ave. #9, 80231
(303) 745-7373
(800) 444-9476
John, N5EHP, Mgr.
denver@hamradio.com

PHOENIX, AZ
1939 W. Dunlap Ave., 85021
(602) 242-3515
(800) 444-9476
Gary, N7GI, Mgr.
1 mi. east of I-17
phoenix@hamradio.com

ATLANTA, GA
6071 Buford Hwy., 30340
(770) 263-0700
(800) 444-7927
Mark, KJ4VO, Mgr.
Doraville, 1 mi. no. of I-285
atlanta@hamradio.com

WOODBRIDGE, VA
(Near Washington D.C.)
14803 Build America Dr. 22191
(703) 643-1063
(800) 444-4799
Steve, W4SHG, Mgr.
Exit 161, I-95, So. to US 1
woodbridge@hamradio.com

SALEM, NH
(Near Boston)
224 N. Broadway, 03079
(603) 898-3750
(800) 444-0047
Chuck, N1UC, Mgr.
sales@hamradio.com
Exit 1, I-93,
28 mi. No. of Boston
saalem@hamradio.com

Special Holiday Discounts Off Our Already Low Prices!



HAM RADIO OUTLET

WORLDWIDE DISTRIBUTION

**GREAT YAESU
WINTER SPECIALS
Through 12/31/06**



\$10 HRD Coupon
\$70 off coupon
Expires 12/31/06

FT-897D VHF/UHF/HF Transceiver

- HF/6M/2M/70CM • DSP Built-in
- HF 100W (20W battery)
- Optional PS • Tuner • TCXO Built-in

Call Now For Our Low Pricing!

\$10 HRD Coupon
\$50 off coupon
Expires 12/31/06

FT-817ND HF/VHF/UHF TCVR

- 5W @13.8V ext DC • USB, LSB, CW, AM, FM
- Packet (1200/9600 Baud FM) • 200 mems
- built in CTCSS/DCS • TX 160-10M, 6M, 2M, 440
- Compact 5.3" x 1.5" x 6.5", 2.6 lbs
- FNB-85 NiMH battery + NC-72B included

Call Now For Low Pricing!

\$10 HRD Coupon
\$5 HRD Coupon
Expires 12/31/06

FT-8800R 2M/440 Mobile

- V-U/V-U/V-U operation
- V-U full duplex • Cross Band repeater function
- 50W 2M 35W UHF
- 1000+ Memory channels
- WIRES ready

Call Now For Low Pricing!

\$10 HRD Coupon
FREE YSK-8900 thru 12/31

FT-8900R Quadband Transceiver

- 10M/6M/2M/70CM • Wires capable
- 800+ memories • Built-in CTCSS/DCS
- Remotable w/optional YSK-8900

Call Now For Special Pricing!

\$10 HRD Coupon
FREE FNB-64 thru 12/31

VX-150 2M Handheld

- Direct Keypad Entry
- 5w output
- 209 memories
- Ultra Rugged

Call Now For Special Pricing!

\$25 off coupon
Expires 12/31/06

VX-2R 2M/440 HT

- World's smallest Dual-band HT w/ wide RX
- 1.5 W RF output
- WIRES compatible
- 1300 Memory channels

Call For Low Price!

\$10 off coupon
Expires 12/31/06

FT-60R 2m/440 HT

- 5W Wide-band receive
- CTCSS/DCS Built-in
- Emergency Auto ID

Low Price!

\$5 HRD Coupon
\$30 off coupon
Expires 12/21/06

VX-7R/VX-7R Black 50/2M/220/440 HT

- Wideband RX - 900 Memories
- 5W TX (300mw 220Mhz)
- Li-Ion Battery
- Fully Submersible to 3 ft.
- Built-in CTCSS/DCS
- Internet WIRES compatible

Now available in Black!

\$5 HRD Coupon
NEW!

VX-6R 2M/220/440HT

- wideband RX - 900 memories
- 5W 2/440, 1.5W 220 MHz TX
- Li-ION Battery - EMI system
- Fully submersible to 3 ft.
- CW trainer built-in

NEW Low Price!

\$10 off coupon
Expires 12/31/06

FT-2000 HF + 6M tcvr

- 100 W w/ auto tuner • built-in Power supply
- DSP filters / Voice memory recorder
- 3 Band Parametric Mic EQ • 3 IF roofing filters

Call Now For Low Pricing!

\$10 HRD Coupon
FREE YSK-857 thru 12/31

FT-575D Ultra compact HF, VHF, UHF

- 100w HF/6M, 50w 2M, 20w UHF
- DSP included • 32 color display
- 200 mems • Detachable front panel (YSK-857 required)

Call For Low Price!

\$10 HRD Coupon
FREE YSK-7800 thru 12/31

FT-7800R 2M/440 Mobile

- 50w 2m, 40w on 440mhz
- Weather Alert
- 1000+ Mems
- WIRES Capability
- Wideband Receiver (Cell Blocked)

Call Now For Your Low Price!

\$25 HRD Coupon
Expires 12/21/06

FT-8900R Quadband Transceiver

- 10M/6M/2M/70CM • Wires capable
- 800+ memories • Built-in CTCSS/DCS
- Remotable w/optional YSK-8900

Call Now For Special Pricing!

\$10 HRD Coupon
FREE YSK-8900 thru 12/31

FT-8900R Quadband Transceiver

- 10M/6M/2M/70CM • Wires capable
- 800+ memories • Built-in CTCSS/DCS
- Remotable w/optional YSK-8900

Call Now For Special Pricing!

AL, GA, CO, WA,
VA, retransmit sales
sales tax, please
www.hamradio.com
contact@hro.com
subject to change
without notice.

Look for the
HRD Home Page
on the
World Wide Web
http://www.hamradio.com

**COAST TO COAST
FREE SHIPPING**
UPS - Most Items Over \$100
Rapid Deliveries From
The Store Nearest To You!

