



PVRC Newsletter

August 2014

President's Letter – Ken KE3X

Welcome to a new contesting year!

This weekend we already completed the first two events of the 2014-2015 contesting year: summer NAQP RTTY and CQWW VHF. While conditions for the VHF contest were far from stellar, the NAQP event saw many new PVRC'ers hit the RTTY airwaves for the first time, as we continue to push NCCC and SMC hard in the NAQP Challenge.

Changes to 5 Meg Program

You will notice a few changes this year on the 5-Meg calendar:

1. **More Events:** We continue our 2-year 'trial period' for NAQP as a 5-Meg eligible contest, through the end of 2015. This means 6 more events in 5-Meg this year (2 runnings of NAQP CW, Phone and RTTY each year). So far, the participation levels have been encouraging, partly due to the NAQP Challenge. This brings the total available 5-Meg events each year to 29

... that's more than one every two weeks!

2. **New Table Added:** 'Table 1' has been added at the bottom of the 5-Meg Rules page. This shows the ground rules for each type of event, including 'Circle Restriction', Split Club Multi-Op, HMO (useful in Sweepstakes) and Expeditions. It's great to have all this information in a single place! Thanks to AA4FU for his work on the table - it should be much easier now to understand the rules and plan contest entries accordingly.

3. **Out of Circle Members:** We have 200+ PVRC members who live 'Out of Circle'. These folks should be happy to see the number of contests where circle restrictions are not applicable - there are 12 events each year where this is the case, including all the NAQP's, WAE, CQ 160 and Russian DX.

August Contests - NAQP CW/SSB and WAE CW

NAQP CW on August 2 is only a few days away ... do you have your operating strategy worked out yet, and a station to operate? If not, shoot a note to the Reflector and we'll get you matched up. The NAQP's are a great warm-up event for Sweepstakes, which is right around the corner. Even if you can't

operate the full 10 hours for NAQP, you might hop on for a few hours to get the kinks out of your station prior to SS. WAE CW follows on August 8/9, followed by the NAQP SSB leg on August 16.

See you in the pileups ... and Go PVRC!

Ken KE3X

PVRC Officers:

President: KE3X Ken Low
Vice President: K8GU Ethan Miller
Vice President: W3LL Bud Governale
Secretary: AA4FU Al Knight
Treasurer: N3RR Bill Hider

Trustees:

K3MM, N3OC, WX3B, W4ZYT, N4NW, K2AV, N4ZR, K4ZA, K3WRY

PVRC Charter Members (all SK):

W3GRF, W4AAV, W4KFC, N0FFZ, W4LUE, W7YS, VP2VI/W0DX, W3IKN, W4KFT

PVRC Website: <http://www.pvrc.org>

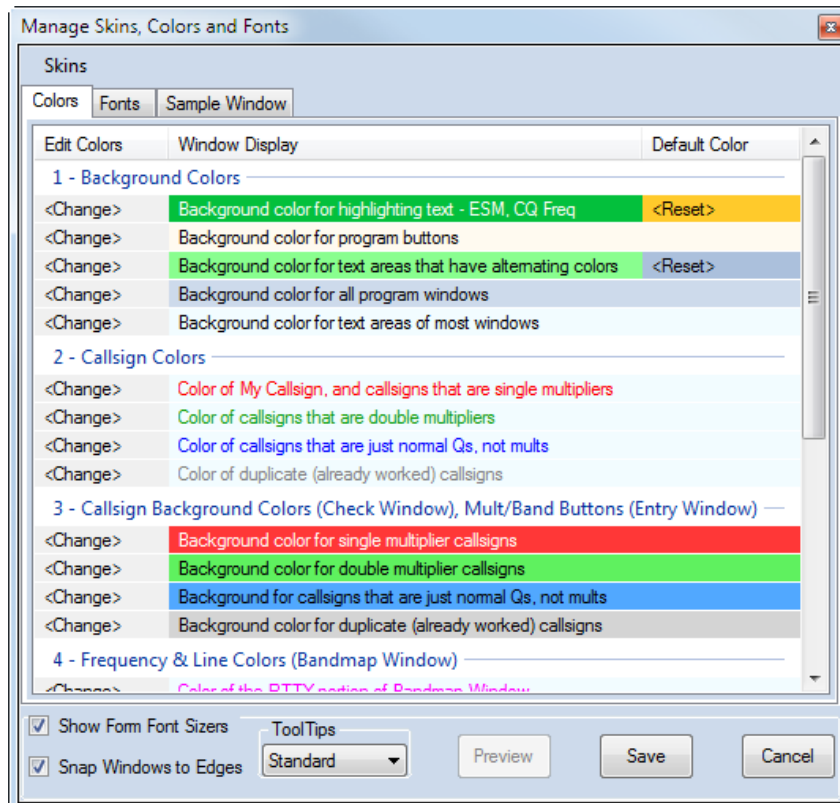
The Next Generation in Contest Logging: N1MM Logger+ Pete N4ZR

As some may know, since 1995 I have played a small part in the N1MM Logger team – mostly in writing documentation and handling user issues – so when John asked me to write something about N1MM Logger+ for this issue of the Newsletter, I agreed, but not without trepidation. The roll-out of a major upgrade is always complicated, and N1MM Logger Classic (as we’re calling it now) is used, conservatively, by at least 8,000 contesters worldwide. The program has over 250,000 lines of code, and moving it to a new development system, as well as making significant changes in virtually every function, is not a trivial exercise.

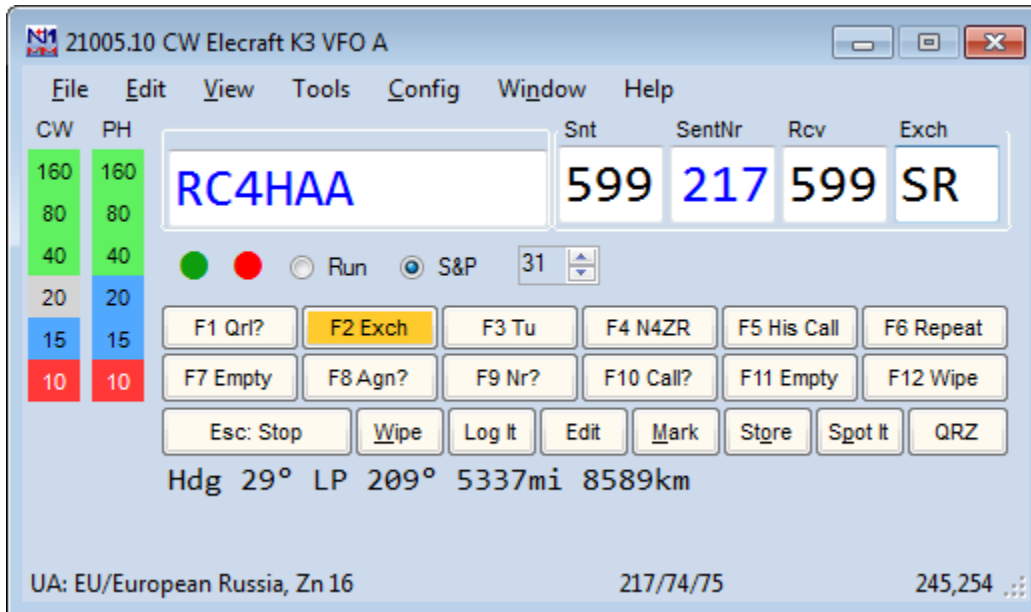
Still, good progress is being made. The code is largely written, and is being exhaustively tested by a team of over 30 alpha testers. We know what the feature set will look like, and what the “look and feel” will be. Current users will have no problem recognizing N1MM Logger+ as an evolution of N1MM Logger Classic. Your external interfaces will all work, just better.

At the end of this article, I’ll provide links to several sources of detailed information, drawn from the presentation N1MM and K8UT made at the Dayton Contest Forum, but for now, I just want to call out a few of the most important changes from a user perspective:

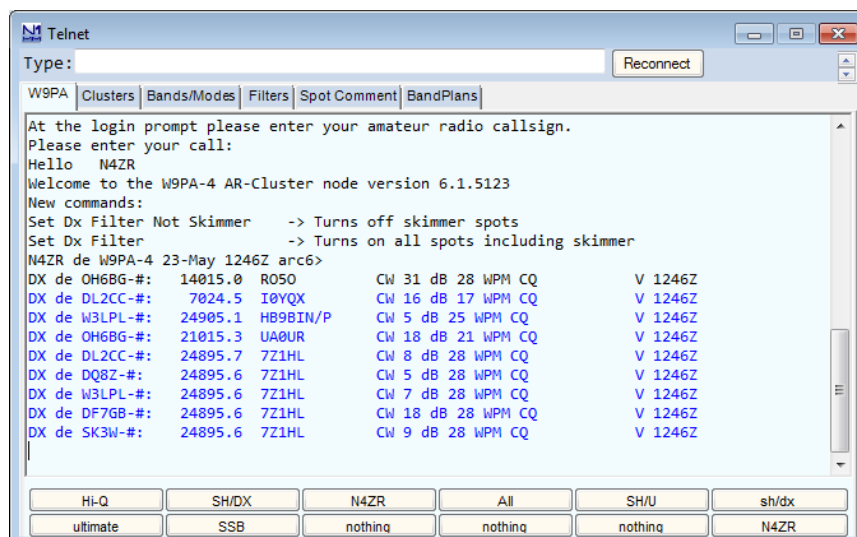
- You can extensively customize fonts and colors, throughout the program. Red/green colorblind? No problem. Impaired vision? This should help a lot.



- Networking has been automated, and functions centralized in a Network Status window. Connect PCs to a network, start N1MM Logger+ on each, and the network automatically forms.
- Up to 99 serial ports for radio control, CW and PTT, and other control and data functions.
- Clickable and color coded band buttons in the Entry Window.



- Log entries editable by a double click on each “field” in the line.
- Much more powerful Super Check Partial, looking for matches not just in your current log and the master.dta file, but also in recent Telnet spots and a Call History file (if used).
- All Telnet controls have been moved to tabs on a redesigned Telnet window, to simplify getting spots flowing.



- The Available Mults and Qs window has been streamlined and made more powerful, for optimized S&P.

Available - 45 Mults 79 Qs of 105 total spots

Mults Only Bands & Modes

	160	80	40	20	15	10
Mults	0	1	7	18	15	4
Qs	0	3	21	28	23	4
Total Qs	0	3	21	28	24	4

Call	Freq	Dir	Mode	S/N	Time v	Spotter
BG8EHZ	21020.1	000° α #	CW	06dB	1132Z	DQ8Z-#
YD1CSV	21017.0	346° #	CW	06dB	1132Z	DL1EMY-#
FS/K4UEE	21034.0	144° #	CW	09dB	1132Z	DL1EMY-#
SN0DMY	21018.1	043° #	CW	08dB	1131Z	DQ8Z-#
JO7KMB	21028.1	331° #	CW	23dB	1131Z	OH6BG-#
SV5/DL3DRN	21024.3	052° #	CW	24dB	1131Z	OH6BG-#
IK2CKR	21021.0	054° #	CW	07dB	1130Z	JA1LZR-#
SV2/RW3AL	21021.2	053° #	CW	02dB	1127Z	RZ3DVP-#
JQ2LYP	21040.3	331° #	CW	34dB	1125Z	BY5CD-#
OK2PX	21014.2	046° #	CW	04dB	1125Z	WZ7I-#
ZS2I	21030.0	108° #	CW	40dB	1124Z	BY5CD-#
KP4CPC	21027.6	152° #	CW	04dB	1124Z	5B4AGN-#
EG5FAS	21023.0	064° #	CW	01dB	1122Z	HA6M-#
UA9CDC	21040.3	022° #	CW	04dB	1121Z	JJ1LIB-#
EI5DR	21019.7	049° #	CW	03dB	1121Z	HB9DCO-#
DL5ZBA	21039.6	047° #	CW	09dB	1120Z	EA4TX-#

This truly just scratches the surface. For more information, look [here](#) and [here](#).

Hints and Kinks: Searching Reflector Archives on PVRC.org – Howie N4AF

Sometimes if you already have a thread to PVRC.org open, you'll get no results when trying to search the reflector archives. For instance, another tab (browser window) was open to PVRC.

The circumvention is to click on ARCHIVES. Then do **not** click on the particular archive you want, instead select **INFORMATION ABOUT THIS LIST** at the top.

You could bookmark it under 'archives' as <http://mailman.qth.net/mailman/listinfo/pvrc>
 From the resulting panel, you should be able to click on Archives and all should be OK.

PVRC 2014 On the Air Reunion – Brad K4RT

2014 Reunion On The Air

After a year's hiatus, the Potomac Valley Radio Club's *Reunion On The Air* was held again this year, and the results are in.



Top scores in the High Power, Low Power, and QRP categories are:

High Power		Low Power		QRP	
N4AF	6169	W4YE	1520	K3TW	204
W4BQF	5887	WB4FDT/3	800		
W2CDO	5780	K3ZO	749		
K3RV	2240	WB4FDT/4	568		
K3WA	1575	AA3S	416		

A total of 23 Reunion scores were submitted this year:

AA3S	LP	416	N4AF	HP	6169
DK5AD	HP	003	W2CDO	HP	5780
K3RV	HP	2240	W2RS	HP	180
K3STX	LP	272	WA2WDT	LP	010
K3TW	QRP	204	W3LL	HP	03
K3WA	HP	1575	W4AGI	LP	175
K3ZO	LP	749	W4BQF	HP	5887
KE3X	HP	684	W4YE	LP	1520
K4RT	LP	172	W4ZYT	HP	610
N3AM	LP	116	WB4FDT/3	LP	800
N3CW	HP	1098	WB4FDT/4	LP	568
N3JT	LP	160			

PVRC thanks all who participated in the 2014 Reunion by making contacts and submitting scores, and congratulations to our top scoring stations.

Legend Call Signs: W3AU, W3GRF, W4KFC

Ed Bissell W3AU, Len Chertok W3GRF, and Vic Clark W4KFC were not only accomplished and respected contesters in their day, they were of admired for their character and operating skill. All three played a significant role in the founding and shaping PVRC for decades before they became silent keys.

This year, the trustees and holders of W3GRF and W4KFC, including Vic's son Ken Clark, graciously allowed club members to activate the calls during this year's Reunion as *Legend Stations*, which provided extra points for contacts with those stations. Legend stations were available for contacts only, and did not submit scores. The W3AU trustee, Pete N4KW, put in a number of hours handing out W3AU contacts. Tim N3QE activated W3GRF and Bob W3YY, Steve K4EU, Brad K4RT and Bud W2RU activated W4KFC.

Club member Carl K3RV echoed the many comments from Reunion participants: "It was fun to work the few stations that were QRV, including the W3AU, W4KFC and W3GRF memorial stations," he said.

Soapbox

The Reunion's one year hiatus did not curb the enthusiasm of many club members who participated this year, as noted in their soapbox comments.

Tim N3QE: "By far the most fun was when I asked stations if they wanted to move to other bands and modes. QSYing for me involves moving alligator clips, switching cables, swapping out tuner coil-sets. Best of all, I got a couple QSOs with W4KFC, a call I remember from my youth in Iowa. There are very few calls I remember from my early days, but W4KFC is one of them because Vic was a true presence on the air, I could tell from his on-air strength in both signal and manner that represented all that was good about ham radio." Tim operated under his own call sign as well as Legend Station W3GRF.



Tim N3QE

Pete N4KW: "I liked the sound of a few bug/speed keys, which brought back memories of the distinguishable fist that various people had. Most notable: Vic Clark W4KFC."

Bud W2RU: "Around 0310Z my Northwest beverage allowed me to pull long-time friend and fellow contester W6SX out of the QRN. He was unreadable on the dipole but 539 on the Beverage. Ever the wag, Hank sent 'ORS SJV' for a bit of nostalgia and my best DX of the evening. Hank reported that he had been hearing me 439 since sometime in the 0200-0300Z hour."

Buddy W4YE: “My brother, W4AGI (ex-K4CAX) was also on for a few QSOs. Were we the only brother’s in the Reunion?” As a young man, as shown in these 2014 & 1953 photos, Buddy held call sign W4YZC, and still has the Vibroplex bug.



Buddy W4YE 2014



Buddy W4YZC 1953

Buddy notes that the original W4YE (1930) was his late father who joined PVRC in 1952 as K6CN/4 and later got W4YE back. His father also held W4AGI, which now belongs to Buddy's brother Vic, also a PVRC member.

Jim WX3B: “I worked three Iceland stations during the Reunion. I ran into a family, and one brother called me from his club station, then he went to his brother's house 2km away and called me with his call...and turned the mic over to his brother. How often do you work 3 TF stations within an hour on 15m SSB near sunset?”

Bill K3WA: “As a PVRC member who has lived out of the circle for about 6 years now I was very happy to see the Reunion come back to life. I enjoyed the Reunion when I was back there and was lucky to be allowed to operate as W4KFC in 2006. I particularly enjoyed this year's approach to using the legacy call signs, adding some spice to the event. Thanks to all who made it happen.”



Station K3WA

Pip WB4FDT: “I submitted two logs, one from Virginia where I operated from the QTH of N4YE Friday night, and the second from Maryland where I operated from my QTH for several hours Saturday and Sunday nights.”



Tom K3TW

Tom K3TW: "Greetings from sunny Lecanto, Florida and many thanks for another enjoyable PVRC Reunion. All bands were in great shape, but activity was only minimal. All QSOs were made running 5 watts output to dipoles." Tom wins the QRP class this year.

Knut DK5AD: “My score is just one QSO with Howie N4AF on Sunday evening on 20m CW, running 500W. Unfortunately no more PVRC members heard. But I had not much time. I was away during most of the weekend at a First Class CW Operators Club dinner in southern Germany.”



Knut DK5AD

The Reunion at 50: Retirement Time or Second Wind?

The very first Reunion was held 50 years ago. According to the June 1964 club newsletter, 35 PVRC members submitted scores that year.

A review of Reunion scores over the past 10 years demonstrates that Reunion participation has been declining, with a steep drop since 2009: 44 Reunion scores were submitted in 2009, 30 in 2010, 26 in 2011, and 25 in 2012. Last year, the Reunion wasn't held at all, and this year 23 Reunion scores were turned in, a 48% drop in Reunion participation in just five years.

Reunion Planning

This year, Reunion planning was carried out by an informal committee consisting of Ken KE3X, Howie N4AF, and Brad K4RT, with Brad serving as coordinator. The committee took five steps to try to stimulate interest in the Reunion:

1. Changed to Semi-Open format: The semi-open format allowed PVRC members to log and earn points for working non-members. The choice to log non-club member QSOs was left to the operator.
2. Revised the point structure: The revised point structure allowed 10 points for working any of the PVRC Legend call signs W3AU, W3GRF, W4KFC. Contacts with PVRC members were worth 3 points each; contacts with non-members 1 point each.
3. Allowed spotting assistance: The spotting networks have been used by Reunion participants over the past several years. However, 2014 is the first year that the Reunion rules expressly sanctioned use of spotting Reunion stations.

4. Legend Call Signs: Club members activated three “PVRC legend” calls, W3AU, W3GRF and W4KFC, worth 10 points under the revised point structure.

5. N1MM Logger Module: PVRC president Ken KE3X asked Nick NA3M to develop a Reunion module for the N1MM Logger. Many Reunion participants noted that they liked the module, so expect to see it available next time.

Survey & Log Statistics

In July, PVRC members were asked to participate in a Reunion survey. The results of the survey as well as a study of log data will be studied in the coming months to determine whether more significant changes should be made to the Reunion. The survey and log data will be presented in an upcoming issue of the PVRC newsletter.

Reunion Reflections

When I contacted PVRC in May to ask if there would be a Reunion this year, the last thing I expected was that club President Ken KE3X would ask me to volunteer to organize it. I learned then that the Reunion was not held last year. With guidance from Ken and Howie N4AF we quickly developed some rules changes and a publicity plan to get the word out to as many club members as possible that a Reunion would be held this year.

This year, I heard primarily contest-style exchanges. That’s fine, of course, but I have been wondering if more club members would be drawn back to the Reunion if, after copying the exchange, we also had a conversation – on SSB or CW? The fellowship I heard listening to Reunion SSB ragchews a decade ago is what attracted me to the Reunion, and that’s coming from a devoted CW man. From my perspective, it seems that the ragchew aspect of the traditional Reunion QSO might be missing.

I appreciate Ken and Howie's assistance, as well as the time devoted by N3QE, W3YY, K4EU, N4KW, and W2RU in activating the PVRC Legend call signs. My thanks also to Ken W4KFC and W3GRF trustee Mike WØVTT for their assistance in developing the Legend call sign operating and logging guidelines, to Alan AA4FU for helping with the various mailing lists, and to Nick NA3M for working up the Reunion module for N1MM Logger.

-- 73, Brad K4RT

Dealing With QRM to Your Garage Door Opener – Joe NE3H

A few years ago I purchased a new garage door opener partially because the Navy Installation is only a few miles from my QTH. The NAVY installed an RF ID system that transmitted a heavy duty constant signal on ~390MHz, the same frequency on which my Garage Door Remotes worked. I sometimes had to go to the side window of the garage, and use the remote at the window to get the door to open! The ARRL Handbook shows this frequency allocation as Government Primary; the Garage Door Openers and other stuff as secondary! So it was obvious that the Navy Parts installation was probably not going to move. Hmm... I purchased a Chamberlain brand Opener that operated on 315MHz. Far enough, I thought. But then again, maybe not.

After that, when running power on 40M CW – guess what? Sure enough, CW or RTTY would activate the garage door control and the door would open. Hmmmm ... I disconnected the opener from AC power. Then back to the shack. Then I remembered (after the door opened) that I purchased the model with Battery Backup. “Oh Heck” I exclaimed! So, I snapped ferrites on the power line (yeah, it could be acting as an antenna) and on each of the 2 control lines. The first control goes to the button (hard wired to the opener) that opens the garage door and the button is beside the personnel door into the house. The second control line goes to the optical sensors that keep the garage door from closing if there is an obstruction. The ferrites helped, but not much.

A lot of us, with small suburban lot who run high power (and even low power) have RFI problems as the antennas are relatively close to our homes and appliances. My 40M antenna is ~ 60' above the garage door opener. So these things are not uncommon.

For the last couple years, I just disconnected the AC power and the Battery backup during contests. Then I decided to see if I could beat it! So I put perhaps 20 ferrites on the AC power cable. Then maybe 5 or more on each of the control lines into to the motor unit. NADA! The garage door was still activated on 40!! After trying a few times, I found that the remote(s) in the cars no longer made the door open and close! I found, by accident, that the memory for remotes was full. Clearing the memory and re-programming the remotes made them operational again.

I began my investigation by checking SWR on the 40 antenna. Then I ran TDR checks on the feedline system to the 40M 2 element Yagi up about 65 feet. I really expected to find a problem but, again, nada!

I remembered seeing an article by, I think, Rich Measures on stopping telephone RFI. It was no longer on his web site - it was probably removed as it was an RFI preventative measure for telephones. It was illegal to modify a telephone instrument or the TelCo wiring in your home. But memory served that the common mode filter was a pair of 470 microHenry inductors in the differential line shunted with a pair of 1000pf caps, one on either side of the inductors. A double protection circuit consisted of a pair of 470 uF inductors on each side of the balanced line with 3 caps of the same value, one at input, one at output and 1 between the inductors. I put shrink tubing over everything to make it neat and keep it from shorting. I made 2 of these, one for each pair of control lines.

Eureka! It worked – I could transmit at full power without affecting the garage door. So I learned RF was **not** coming in the power line and it was stopped by these filters.

Unfortunately, the garage door no longer opened when it was supposed to open. Neither did the remotes or the button beside the entrance door. Now I guessed and removed the filter on the control pair coming from the garage door safety optical sensors. Yup, the garage door opened and closed as demanded. However, a trip back to the shack showed that the door still opened and closed as it should when running power on 40M!

Now, what to do? Well, I removed the filter in the previous step but suspected that the caps were an issue. So I took about 10' of balanced line (that came from the garage door installation package) and wound it on a #43 ferrite core. Hooked it up again. Eureka! The garage door opened and closed. Transmitting full power on 40M had no effect on the garage door opener.

By the way, a simple balanced line filter on the XYL's Lamp Timer solved that issue.

Silent Key – Chuck W3JPT (from his son John)

Chuck Dorian of Issaquah, WA, W3JPT, was born in Quincy, MA in 1921. He was first licensed in March of 1939 as W1LXO of Natick, Mass. He specialized in communications while in the US Coast Guard from 1942 to 1972, ultimately as the Coast Guard Chief of Communications in 1964 and then as Deputy, Office of Telecommunications, Department of Transportation in 1967. For the next 5 years he represented the US in international collaboration crafting the rules and regulations enhancing the aircraft, maritime and land mobile use of the radio spectrum in Geneva at the ITU. From 1969 to 1977 he was the first Secretary and a Director of AMSAT. From 1982 to 1990 he was the Washington, DC representative for the ARRL. He had recently received the 75 year Anniversary Award from QCWA.

From Fred, W3ICM: *"I got to know Chuck through the ACAR, and I also served with him on numerous U.S. delegations to the ITU CCIR Study Group 8. We operated 4U1ITU together many times, and operated it together as a single transmitter multi-operator entry in a 10-meter contest. Can't recall the exact year, maybe 1982"*

Rest in peace, Chuck."



W3JPT

Grid Sq. CN 97

From Space To Satellite

QSO WITH	DATE	CONFIRMING QSO			MHz	MODE
		JTC	REPORT			

QUARTER CENTURY WIRELESS ASSOCIATION, INC. Pse QSL Trx

Charles Dorian
 3521 255th Lane SE #19 King County Issaquah, WA 98029
 QCWA No. 4118

Cumberland ARC (PA) Special Event Station – Glenn K3SWZ

The Cumberland Amateur Radio Club (serving Cumberland County, PA since 1964) will operate an Amateur Radio Special Event station on Saturday September 6, 2014 to celebrate its own 50th anniversary and the history and heritage of Cumberland County, Pennsylvania.

The Special Event Station will operate under the club call sign, K3IEC, from 1400 to 0200 UTC. The SSB frequencies are 3.860, 7.260, 14.260, 21.360, 28.360, 50.220, 144.225 (USB) all +/- CW 28.045, 21.045, 14.045, 7.045, 3.545, 146.490 FM

Send QSL card and #10 SASE. For Certificate send QSL, and 3 Forever Stamps and address label on a 9x12 envelope to:

CUMBERLAND AMATEUR RADIO CLUB
1367 KINER BLVD
CARLISLE, PA 17013
USA

Membership News – Bud W3LL

PVRC added several new members since the last newsletter. Please welcome:

- Jon N4ERD, Bernie K3OUD, Jerry N3VBJ, Frank W3FGD and Brian N3VN in the Northwest Chapter.
- Jason W3AAX in the Annapolis Chapter.

Chapter leaders please remember to complete the [Meeting Attendance Report](#).

Upcoming Contests and Log Due Dates

Contests This Month

- Aug 2 – NAQP CW
- Aug 8 – WAE CW
- Aug 16 – SARTG RTTY
- Aug 16 – NAQP SSB
- Aug 29 – YO DX HF
- Aug 10 – DL DX RTTY

Logs Due This Month

- Aug 12 – IARU HF

See WA7BNM's [Contest Calendar](#) for more detail and the latest information.

From the PVRC Treasurer – Bill N3RR

PVRC has chosen not to implement an annual Dues requirement. We depend on the generosity of all of our club members to finance our annual budget. In addition, active PVRC members are expected to participate and submit logs for at least two PVRC Club Competition contests per year.

When contemplating your donation to PVRC, each member should consider the benefit you are receiving from PVRC and its many opportunities for your personal growth in our wonderful hobby, then donate accordingly.

Direct donations to PVRC via Credit Card or PayPal may be made by clicking this "Donate" button and clicking the next Donate button that appears on your screen:



The Editor's Last Word – John K3TN

I think this is the longest PVRC newsletter ever! Thanks to K4RT, NE3H, and N4ZR for the great content – especially Brad's phenomenal job with the Reunion writeup.

Next month we'll have a lot of WRTC content, from many of the PVRCers who were at the event but I'm also looking for expanded soapbox comments from everyone who operated in the IARU and chased the WRTC stations. Send whatever you can pull together to jpescatore at aol dot com.



Eyeball QSO Directions

The latest info on local club meetings and get together will always be sent out on the [PVRC reflector](#) and posted on the PVRC [web site](#).

NW Region: Meetings are generally held on the third Tuesday of each month at the Golden Corral Frederick, MD
5621 Spectrum Dr.
Frederick, MD 21703
PVRC Meets in the BANQUET ROOM
(301) 662-5922

From Interstate 270 south of Frederick, MD
take MD Route 85, "Buckeystown Road" NORTH.
First right on Spectrum Drive.
Restaurant is in a couple of blocks. Most arrive about 6 PM for dinner and informal discussions. The meeting begins at 7:00 PM.

Contact: Jim [WX3B](#)

Central Region: Meets monthly the second Monday of each month, except June, July & August). The location alternates between the below MD and VA locations. Pre-meeting dinners start at 6:00 pm and meetings start at 7:30 pm.

VA LOCATION: Anita's, 521 E. Maple Ave, Vienna, VA. Tel: 703-255-1001. Meets at this location during the months of February, April and October.

Contact: Rich [NN3W](#)

MD LOCATION: Max's Café. 2319 University Blvd W, Wheaton MD 20902. Tel: 301-949-6297 People usually begin arriving at the restaurant around 6:30. Meets at this location during the months of January, March, May, September and November. Contact: Art [K3KU](#)

The Laurel, MD Region: Bill N3XL The PVRC get-together is held at the first [LARC](#) meeting each quarter at the clubhouse.

The Annapolis Crew: Dan K2YWE Meetings are held on the 4th Wednesday of each month at Broadneck Grill in Annapolis. We gather at about 5:30 PM and order dinner about 6. We break up usually before 8 PM. E-Mail [K2YWE](#) to be put on the e-mail reminder list.

PVRC-NC: The PVRC NC-East chapter meetings are held at [Manchester's Bar and Grill](#) on the 9100 block of Leesville Rd. in North Raleigh, with "QRM" beginning at 6:00pm and the dinner meeting following shortly thereafter. The meeting is held monthly on the 1st Thursday of most months, cancellations or changes usually announced on the [PVRC-NC website](#). [The PVRC NC-West Chapter](#) holds its meetings on the 4th Monday of each month at [the Mellow Mushroom](#), 314 W. 4th St., Winston-Salem, NC. Ragchew at 7:00pm, dinner meeting starts at 7:30pm. All contesters and interested guests are invited!

Central Virginia Contest Club: Ed NW4V Meets the first Tuesday of the month at St. Martins Church, 9000 St. Martin Lane, Richmond VA, (between W. Broad St. and N. Parham Road). Our meeting begins at 7PM.

Over the Hill Bunch: The group meets for lunch at noon alternately in Maryland at the College Park Holiday Hotel Route 1 and the Beltway or in Virginia at the Parkview Marriot near route 50 and the Beltway. Meetings generally are held on the last Wednesday of the month and are subject to change. Meetings are announced by E-Mail. All PVRC members, non-members interested in membership and guests are welcome. For information contact Roger Stephens, K5VRX, 703-658-3991 for Virginia meetings; or Cliff Bedore [W3CB](#) or get on 147.00 for Maryland meetings.

Downtown Lunch Group: Meets on the 3rd Wednesday or Thursday of the month in the downtown area of Washington, DC. Locations occasionally change, but are always Metro accessible. Details are sent out on the PVRC reflector. Feel free to contact Eric W3DQ or Brian WV4V for details and directions.

Southwest VA Chapter: The Southwest VA group meets each Wednesday at about 8:30 AM at Hardees at 20265 Timberlake Road in Lynchburg, VA. This is an informal gathering, but normally has about 10-12 attendees. Contact Mark Sihlanick N2QT, Tel: 434-525-2921

Southern Maryland Chapter: We meet on the last Wednesday of each month at Nicolletti's Pizza located at: 22741 Three Notch Road, California, MD 20619 Phone: 301-863-2233. Check out their menu [here](#).

Talk-in on 145.350 (-) PL-156.7

Meet and Eat 6:30 – 7:30, PVRC meeting afterwards.

Contact the Chapter Chair, Tom Shelton, ND3N at GL1800Winger<at>Verizon<dot>net or (240) 434-3811 with any questions

If you'd like to add or correct a listing, contact K3TN for inclusion in the Newsletter!

Now a Word From Our Sponsors

PVRC doesn't ask for dues, but the Club does have expenses. Please donate online [here](#). You can also support the Club by buying from the firms listed who advertise in the newsletter, or by getting your company to sponsor the newsletter!

QSL CARDS By LZ1JZ

WWW.LZ1JZ.COM



By Scott KA9FOX

- Free Ham Radio Classifieds (most popular ham swap site)
 - Low Cost Web Hosting, Email & Domain Name Services
 - Web Design & Development
- <http://www.QTH.com>**



Your source for DX News!

The Daily DX - is a text DX bulletin that can be sent via e-mail to your home or office Monday through Friday and includes DX news, IOTA news, QSN reports, QSL information, a DX Calendar, propagation forecast and much, much more. With a subscription to The Daily DX you will also receive DX news flashes and other interesting DX tidbits. *Subscriptions are \$49.00 for one year or \$28.00 for 6 months.*

The Weekly DX - is a product of The Daily DX that can be sent weekly to your home or office via e-mail in the form of a PDF (portable document format). It includes DX news, IOTA news, QSN reports, QSL information, a DX Calendar, propagation forecast and graphics. *Subscriptions are \$27.00 for one year.*

Get a free two week trial of The Daily DX and The Weekly DX by sending a request to bernie@dailydx.com.

The Daily DX
3025 Hobbs Road
Glenwood, Maryland 21738
Phone: 410-489-651
Skype w3ur-bernie

ANAHEIM, CA
(Near Disneyland)
933 N. Euclid St., 92801
(714) 533-7373
(800) 854-6046
Janet, KL7MF, Mgr.
anaheim@hamradio.com

BURBANK, CA
1525 W. Magnolia Blvd. 91506
(818) 842-1786
(800) 854-6046
Eric, KA6IHT, Mgr.
Magnolia between
S. Victory & Buena Vista
burbank@hamradio.com

OAKLAND, CA
2210 Livingston St., 94606
(510) 534-5757
(800) 854-6046
Mark, W7YN, Mgr.
I-880 at 23rd Ave. ramp
oakland@hamradio.com

SAN DIEGO, CA
5375 Kearny Villa Rd., 92123
(858) 560-4900
(800) 854-6046
Tom, KM6K, Mgr.
Hwy. 163 & Claremont Mesa
sandiego@hamradio.com

SUNNYVALE, CA
510 Lawrence Exp. #102, 94085
(408) 736-9496
(800) 854-6046
Dan K6DN, Co-Mgr.
Howard, W6HOC, Co-Mgr.
So. from Hwy. 101
sunnyvale@hamradio.com

NEW CASTLE, DE
(Near Philadelphia)
1509 N. Dupont Hwy., 19720
(302) 322-7092
(800) 444-4476
Rick, K3TL, Mgr.
RT.13 1/4 mi., So. I-295
newcastle@hamradio.com

PORTLAND, OR
11705 S.W. Pacific Hwy.
97223
(503) 598-0555
(800) 854-6046
Leon, W7AD, Mgr.
Tigard-99W exit
from Hwy. 5 & 217
portland@hamradio.com

DENVER, CO
8400 E. Hill Ave. #9, 80231
(303) 745-7373
(800) 444-9476
John, N5EHP, Mgr.
denver@hamradio.com

PHOENIX, AZ
1939 W. Dunlap Ave., 85021
(602) 242-3515
(800) 444-9476
Gary, N7GI, Mgr.
1 mi. east of I-17
phoenix@hamradio.com

ATLANTA, GA
6071 Buford Hwy., 30340
(770) 263-0700
(800) 444-7927
Mark, KJ4VO, Mgr.
Doraville, 1 mi. no. of I-285
atlanta@hamradio.com

WOODBRIIDGE, VA
(Near Washington D.C.)
14803 Build America Dr. 22191
(703) 643-1063
(800) 444-4799
Steve, W4SHG, Mgr.
Exit 161, I-95, So. to US 1
woodbridge@hamradio.com

SALEM, NH
(Near Boston)
224 N. Broadway, 03079
(603) 898-3750
(800) 444-0047
Chuck, N1UC, Mgr.
saalem@hamradio.com
Exit 1, I-93,
28 mi. No. of Boston
saalem@hamradio.com

Special Holiday Discounts Off Our Already Low Prices!



HAM RADIO OUTLET

WORLDWIDE DISTRIBUTION

GREAT YAESU WINTER SPECIALS Through 12/31/06



FT-897D VHF/UHF/HF Transceiver

- HF 6M/2M/70CM • DSP Built-in
- HF 100W (20W battery)
- Optional PS • Tuner • TCXO Built-in

Call Now For Our Low Pricing!

FT-817ND HF/VHF/UHF TCVR

- 5W @13.8V ext DC • USB, LSB, CW, AM, FM
- Packet (1200/9600 Baud FM) • 200 mems
- built in CTCSS/DCS • TX 160-10M, 6M, 2M, 440
- Compact 5.3" x 1.5" x 6.5", 2.6 lbs
- FNB-85 NiMH battery + NC-72B included

Call Now For Low Pricing!

FT-8800R 2M/440 Mobile

- V-U/V-U operation
- V-U full duplex • Cross Band repeater function
- 50W 2M 35W UHF
- 1000+ Memory channels
- WIRES ready

Call Now For Low Pricing!

FT-8900R Quadband Transceiver

- 10M/6M/2M/70CM • Wires capable
- 800+ memories • Built-in CTCSS/DCS
- Remotable w/optional YSK-8900

Call Now For Special Pricing!

VX-2R 2M/440 HT

- World's smallest Dual-band HT w/ wide RX
- 1.5 W RF output
- WIRES compatible
- 1300 Memory channels

Call For Low Price!

FT-60R

- 2m/440 HT
- 5W Wide-band receive
- CTCSS/DCS Built-in
- Emergency Auto ID

Low Price!

VX-7R/VX-7R Black

50/2M/220/440 HT

- Wideband RX - 900 Memories
- 5W TX (300mw 220Mhz)
- Li-Ion Battery
- Fully Submersible to 3 ft.
- Built-in CTCSS/DCS
- Internet WIRES compatible

Now available in Black!

VX-6R

2M/220/440HT

- wideband RX - 900 memories
- 5W 2/440, 1.5W 220 MHz TX
- Li-ION Battery - EMI system
- Fully submersible to 3 ft.
- CW trainer built-in

NEW Low Price!

VX-150

2M Handheld

- Direct Keypad Entry
- 5w output
- 200 memories
- Ultra Rugged

Call Now For Special Pricing!

FT-575D

Ultra compact HF, VHF, UHF

- 100w HF/6M, 50w 2M, 20w UHF
- DSP included • 32 color display
- 200 mems • Detachable front panel (YSK-857 required)

Call for Low Price!

FT-7800R 2M/440 Mobile

- 50w 2m, 40w on 440mhz
- Weather Alert
- 1000+ Mems
- WIRES Capability
- Wideband Receiver (Cell Blocked)

Call Now For Your Low Price!

FT-2000 HF + 6M tcvr

- 100 W w/ auto tuner • built-in Power supply
- DSP filters / Voice memory recorder
- 3 Band Parametric Mic EQ • 3 IF roofing filters

Call Now For Low Pricing!

FT-8900R Quadband Transceiver

- 10M/6M/2M/70CM • Wires capable
- 800+ memories • Built-in CTCSS/DCS
- Remotable w/optional YSK-8900

Call Now For Special Pricing!

AL, GA, CO, WA, VA, retransmit sales tax, please see instructions, restrictions, and limitations, subject to change without notice.

Look for the HRD Home Page on the World Wide Web <http://www.hamradio.com>

COAST TO COAST FREE SHIPPING
UPS - Most Items Over \$100
Rapid Deliveries From The Store Nearest To You!

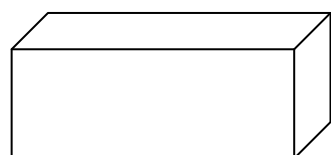
Attention: Contesters

7 Big Problems that are Probably Affecting Your Scores Right Now!

and

How The RF Connection's Mike-Link and
Shure® Legendary Performance™ Broadcast Headsets

Solve them ALL!



Your Radio

← Mic/PTT cable
RX Audio: L/R cable
From Footswitch →



The RF Connection's
Mike-Link

← Headset cable →



Shure BRH440M
Broadcast Headset

Problem #1: Foot Not Near Footswitch, QSO Missed

Solution #1

Use Your Finger Instead!

- Mike-Link finger-touch PTT
- Momentary SPST switch
- Positive tactile feel



Problem #5: Operating CW, you have a "pain in the head" after "Y" hours on-air

Solution #5 - Use Mike-Link

Periodically, Flip the Reverse/Inphase Audio Switch

- Reverses mono audio source for greater listening pleasure



Problem #2: You wear eyeglasses and you have a "pain in the temple" after "X" hours on-air

Problem #3: Brand 'Z' comfortable headset solves problem #2, BUT increases external background noise

Solutions #2 & #3

Use Shure BRM440M
Broadcast Headset

- External background noise isolating
- Closed back—noise isolating
- Gamer-style, circumaural (over-the-ear) ear cup pads



Problem #6: Special microphone is needed for your ICOM radio

Problem #7: External batteries needed when your ICOM-specific headset is used with other radio brands

Solutions #6 & #7

Use Mike-Link & Shure BRM440M

- Built-in, user-selectable, Active ICOM pre-amp
- External power/battery NOT required
- Built-in, user-selectable mic input impedance 2.5K or 10k

Call For Your FREE REPORT:

"The R.F. Connection's 'Mike-Link' and
Shure® Legendary Performance™
Broadcast Headsets"

Call Joel for your SPECIAL PVRC PRICE!

301-840-5477

Problem #4: "RF in your mic audio OM!"

Solution #4 - Use Mike-Link

Ferrite RF suppression chokes included on:

- microphone audio
- receiver audio
- PTT



8:30 am to 4:30 pm ET Monday-Friday
1230 to 2030 UTC (March-October)
1330 to 2130 UTC (November-February)
Tech/International: 330.572.3200
Country Code: +1
Fax: 330.572.3279 Sale Code: 1408PVRC

DXENGINEERING.COM
800-777-0703

[DX Engineering](#) can provide you with everything you need to stay competitive, including advice from our team of experienced Amateur Operators. Plus, DX Engineering has the fastest shipping in the industry.

2X Arrays TX38 Yagi Antenna—Click for Details.

This tri-band eight-element Yagi offers exceptionally high performance on the 20/15/10 meter bands. Its durability makes it ideal for permanent installations, but it's compact and light enough to be used during Field Day.

The [TX38](#) is so versatile, that it was selected as the official tri-band antenna of the 2014 World Radio Team Championship.



American-Made Coaxial Cable—Click for Details.

DX Engineering has high-performance [Coaxial Cables](#) in a variety of lengths and configurations. There are several cable types ideal for many applications, from short in-shack jumpers to long outside runs to your antenna. DX Engineering will even install the connectors you want, test the assembly and ship it to your door.



Cable Grippers—Click for Details.

These hand grippers are the perfect complement to DX Engineering's [Coaxial Cable Prep Tools](#). They help you hold your cable while you're doing the proper prep. They're also effective for holding the cable as you're pulling it off a spool or out of a box.

DX Engineering offers several [cable strippers](#) to complete your cable prep job.



Ultra-Grip 2 Crimp Connector Hand Tool Kit—Click for Details.

This kit includes everything you need to make professional-quality crimps on coaxial and Powerpole® connectors. The [kit](#) comes with the Ultra-Grip 2 tool, 5 crimp dies, shears, braid trimmer, wire terminals, Allen wrench and case. You get crimp dies for RG-8U, LMR-400, RG-8X, and LMR-240 type cables, along with dies for Powerpole 15A, 30A and 45A connectors. The tool, dies and case are also available separately.



Stay competitive: Get the right parts and blazing-fast shipping. If your order is in by 10 pm Eastern and the parts are in stock, DX Engineering will put it on a truck the same day. Request your catalog and shop online 24 hours a day, 7 days a week at [DXEngineering.com](#).

FREE STANDARD SHIPPING on most orders over \$99!
Limited-Time Offer. Details at [DXEngineering.com](#)